



Storm Water Management Program MS4 Annual Implementation Report City of Kirby, Texas

Submitted By:



515 Busby Drive, Suite 101
San Antonio, Texas 78209
TBPE No. F-2573

Permit Year 8
TPDES Permit No. TXR040086
GEI Project No. KIRBY-001
March 20, 2026

515 Busby Drive
San Antonio, Texas 78209
Phone: (210) 342-3991
Fax: (210) 342-6065
Web Page: www.givlerengineering.com



Transmittal

To: Dr. Brian Rowland, City Manager City of Kirby 112 Bauman Kirby, Texas 78219	From: Kyle Stengl, Resource Compliance Specialist
	Date: March 20, 2026
	Re: Phase II Storm Water
	Proj. No.: KIRBY-001
	cc:

Please find attached:

- Drawings _____
- Plats _____
- Specifications _____
- Photocopies _____
- Change Order _____
- Report _____

Quantity	Date	Description
1	03/20/2026	TCEQ Annual Report – To be reviewed and signed.
1	N/A	Extra signature page.

Transmittal purpose:

- For review _____
- Modify as noted _____
- For your use _____
- As requested _____
- Signature required _____

Comments:

Attached is the TCEQ Annual Report for new permit year 8 for your review. Please sign the (1) attached signature sheet. Forms will be collected on Friday, March 27, 2026.

Thank you!



City of Kirby

TXR040086

TCEQ Region 13

515 Busby Drive, San Antonio, Texas 78209

TBPE No. F-2573

March 20, 2026

Texas Commission on Environmental Quality
Stormwater & Pretreatment Team Leader (MC-148)
P.O. Box 13087
Austin, TX 78711-3087

Re: Phase II MS4 Annual Report Transmittal for the City of Kirby

TPDES Authorization: TXR040086

GEI Project No. KIRBY-001

Dear Team Leader:

This letter serves to transmit the required annual report for the Texas Pollutant Discharge Elimination System Small Municipal Separate Storm Sewer System General Permit, Authorization Number TXR040086 for the City of Kirby.

The annual report is for Year 8. The reporting period's beginning 08/01/2025 and ending 01/01/2026.

A Notice of Intent was submitted as there were significant changes for the next permit year due to the updating of the Stormwater General Permit from the TCEQ.

As required by the general permit, a copy of the report has been mailed to the TCEQ's regional office **13** in San Antonio, Texas.

Sincerely,

Kyle Stengl, Resource Compliance Specialist

Givler Engineering, Inc.

Phone: (210) 342-3991

www.givlerengineering.com

Phase II (Small) MS4 Annual Report Form

TPDES General Permit Number TXR040000

Contents

A. General Information.....	1
B. Status of Compliance with the MS4 GP and SWMP	1
C. Stormwater Data Summary.....	16
D. Impaired Waterbodies	16
E. Stormwater Activities.....	18
F. SWMP Modifications.....	18
G. Additional BMPs for TMDLs and I-Plans.....	19
H. Additional Information.....	19
I. Construction Activities	20
J. Certification	21

Comprehensive Schedule for SWMP Implementation Program

Exhibits

Exhibit A – Supporting Documents for MCM 1 - Public Education, Outreach, and Involvement

Exhibit B – Supporting Documents for MCM 2 - Illicit Discharge Detection and Elimination (IDDE)

Exhibit C – Supporting Documents for MCM 3 - Construction Site Storm Water Runoff Control

Exhibit D – Supporting Documents for MCM 5 - Pollution Prevention/Good Housekeeping for Municipal
Operations

Note: (No Supporting Documents for MCM 4)

A. General Information

Municipality/Authorization Number: City of Kirby/TXR040086

Reporting Year (year will be either 1, 2, 3, 4, or 5): 8

Name of MS4: City of Kirby

MS4 Operator Level: 2

Annual Reporting Year Option Selected by MS4:

Calendar Year: _____ Permit Year: X Fiscal Year: _____ Last day of fiscal year: (_____)
 Reporting period beginning date: 08/01/2025 Reporting period end date: 01/01/2026

Contact Name: Kyle Stengl Telephone Number: (210) 342-3991

Email: stengl@givlerengineering.com Mailing Address: 515 Busby Drive, San Antonio, TX 78209

A copy of the annual report was submitted to the TCEQ Region: YES X NO ____
 Region the annual report was submitted to: TCEQ Region 13

B. Status of Compliance with the MS4 GP and SWMP

1. Provide information on the status of complying with permit conditions: (TXR040000 Part IV.B.2)

	Yes	No	Explain
Permittee is currently in compliance with the SWMP as submitted to and approved by the TCEQ.	X		Permittee has maintained compliance with the SWMP submitted to TCEQ.
Permittee is currently in compliance with recordkeeping and reporting requirements.	X		Permittee has maintained all records and meets all reporting requirements.
Permittee meets the eligibility requirements of the permit (e.g., TMDL requirements, Edwards Aquifer limitations, compliance history, etc.).	X		Permittee continues to meet all eligible requirements of the MS4 permit.
Permittee conducted an annual review of its SWMP in conjunction with preparation of the annual report	X		Permittee has conducted an annual review of its SWMP in conjunction with preparation of the annual report.

2. Provide a general assessment of the appropriateness of the selected BMPs. You may use the table below to meet this requirement (see **Example 1 in instructions**):

MCM(s)	BMP #	BMP Name	BMP is appropriate for reducing the discharge of pollutants in stormwater (Answer Yes or No and explain)
1: Public Education, Outreach, and Involvement	1.1	NOI and NOC Public Comment	Yes, a copy of the SWMP is maintained at the front desk of city hall for public access.
	1.2	Recurring Public Comment	Yes, city council meetings were agendized each month with time for citizens to comment, which could be used to discuss any storm water issues or questions.
	1.3	Brochures and Fact Sheets	Yes, the city raises awareness of storm water pollution prevention, improvement, and preservation of storm water quality.
	1.4	Household Hazardous Waste	Yes, residents can contact the County's Household Hazardous Waste Contractor to schedule an at home pickup. This is a service the county offers residents to make it easy to properly dispose of potentially hazardous materials to reduce pollution in stormwater.
	1.5	Stormwater Website	Yes, the stormwater website is an effective communication tool providing a continual means to share and exchange information to anyone seeking knowledge regarding the stormwater management program.
	1.6	Storm Drain Marking	Yes, storm drain markings help the public easily identify their location and raises awareness that runoff carried discharges untreated into local streams.
	1.7	Stormwater Public Awareness Survey	Yes, the public's comments help us identify sources of storm water pollution throughout the city and keep them engaged in promoting storm water quality.
End of MCM 1: Public Education, Outreach, and Involvement			
2: Illicit Discharge Detection and Elimination (IDDE)	2.1	Storm Sewer Map	Yes, the MS4 map shows the location of each outfall and the names and locations that discharge into the waters of the U.S.

MCM(s)	BMP #	BMP Name	BMP is appropriate for reducing the discharge of pollutants in stormwater (Answer Yes or No and explain)
	2.2	Illicit Discharge Detection Plan	Yes, this plan helps us identify sources of pollution using regularly scheduled observations.
	2.3	Illicit Discharge and Dumping Hotline	Yes, concerns reported to the hotline allow for quick response to illegal discharges and complaints.
	2.4	Illicit Discharge Ordinance Update	Yes, this ordinance helps the city provide the health, safety, and general welfare of the public and the city through regulating the discharge of pollutants.
End of MCM 2: Illicit Discharge Detection and Elimination			
3: Construction Site Storm Water Runoff Control	3.1	Technical Manual for Construction Runoff	Yes, the manual explains appropriate storm water controls for construction sites and gives guidance for alternative solutions.
	3.2	Site Plan Review Program	Yes, program reviews site plans and determines proper measures during construction procedures are incorporated in order to control erosion, sedimentation, and other sources of storm water pollution.
	3.3	Construction Site Inspection Program	Yes, through periodic inspections, this program helps construction sites to remain in compliance and reduce sources of pollution.
	3.4	Construction Runoff Hotline	Yes, concerns reported to the hotline allow for quick response to illegal discharges and complaints regarding construction activities.
	3.5	Construction Storm Water Management Ordinance Update	Yes, this ordinance establishes requirements for contractors to reduce pollutants in storm water runoff.
	3.6	City Staff Training and Development	Yes, training focused on storm water BMPs helps grow knowledge and improve level of awareness.
End of MCM 3: Construction Site Storm Water Runoff Control			

MCM(s)	BMP #	BMP Name	BMP is appropriate for reducing the discharge of pollutants in stormwater (Answer Yes or No and explain)
4: Post-Construction Storm Water Management in New Development and Redevelopment	4.1	Technical Manual for Post-Construction Runoff	Yes, the manual explains appropriate storm water controls and provides developers and contractors guidance on pollutant controls and proper maintenance criteria for long-term stabilization.
	4.2	Site Plan Review Program for Post-Construction Runoff	Yes, site plans submitted to the city are reviewed by the city's storm water consultant, who provides recommendations to enhance post-construction runoff controls, as necessary.
	4.3	Long-Term Inspection and Maintenance Plan for Post-Construction Runoff	Yes, the city's storm water consultant will perform annual inspections and determine if maintenance is required for all completed construction sites to ensure compliance with post-construction storm water management control requirements.
	4.4	Post Construction Storm Water Management Ordinance Update	Yes, the ordinance helps establish requirements for storm water quality controls and implement long-term inspection and maintenance requirements.
End of MCM 4: Post-Construction Storm Water Management in New Development and Redevelopment			
5: Pollution Prevention/Good Housekeeping for Municipal Operations	5.1	Municipal Employee Pollution Prevention Manual	Yes, this manual informs current and new city employees on proper handling procedures and specifies methods used to reduce the potential for pollution.
	5.2	Municipal Employee Training	Yes, city employees who handle processes which may impact storm water quality receive an introduction to pollution prevention and tips on maintaining good housekeeping practices in their facility.
	5.3	Street Sweeping	Yes, street sweeping is an effective way to prevent pollutants from entering storm drains, watersheds, and rivers, while keeping streets and gutters looking great.
	5.4	Pest Management Program	Yes, this program has been established to address insect problems and provides guidance on the safety and training requirements related to the pesticide application.

MCM(s)	BMP #	BMP Name	BMP is appropriate for reducing the discharge of pollutants in stormwater (Answer Yes or No and explain)
	5.5	Disposal of Waste Materials	Yes, the city reviews waste disposal procedures and process for both solid waste and hazardous materials to ensure they are properly disposed of. The city also reminds its staff annually through employee training.
	5.6	Contractor Oversight Procedures	Yes, the city requires its contractors to ensure that they use appropriate storm water control measures and operating procedures.
	5.7	Inventory of Facilities and Stormwater Controls	Yes, inventory of facilities and storm water controls help identify high priorities that have the potential to generate storm water pollutants.
	5.8	Assessment of Operations and Maintenance Activities	Yes, through assessment of the City's operations and maintenance activities, we can identify pollutants of concern and implement measures to reduce the discharge of pollutants.
End of MCM 5: Pollution Prevention/Good Housekeeping for Municipal Operations			

3. Describe progress towards achieving the goal of reducing the discharge of pollutants to the MEP. If no progress was made or the BMP did not result in a reduction in pollutants, provide an explanation. Use the table below to meet this requirement (**see Example 2 in instructions**):

MCM(s)	BMP#	BMP Name	Information Used & Quantity/Units	Does the BMP Demonstrate a Direct Reduction in Pollutants? (Answer Yes or No and explain)
1: Public Education, Outreach, and Involvement	1.1	NOI and NOC Public Comment	Provide one opportunity for residents to comment on executive director's comments to the NOI and NOC's.	No. Though this BMP does not result in a direct reduction of pollutants, the public has the opportunity to participate and feedback on all public notices.
	1.2	Recurring Public Comment	Provide opportunities each month for public comment during city council meetings.	No. Pollutants will be reduced over time as citizens participate and provide feedback on the SWMP.
	1.3	Brochures and Fact Sheets	Issue two newsletters each year.	No. Though this BMP does not result in a direct reduction of pollutants, educating the citizens will eventually reduce litter, hence pollutants.
	1.4	Household Hazardous Waste	Provide 1 opportunity for residents to dispose of household hazardous waste.	Yes. This service makes it easy for residents to properly dispose of potentially hazardous materials to reduce pollution in stormwater.
	1.5	Stormwater Website	Record copies of all informational material updated.	No. Though this BMP does not result in a direct reduction of pollutants, educating the citizens will eventually reduce litter, hence pollutants.
	1.6	Storm Drain Marking	Inspect 50% of storm drains markings.	No. Markers on storm drains serve as a visual reminder that will reduce pollutants over time.
	1.7	Stormwater Public Awareness Survey	Distribute 100 surveys.	Yes. When citizens identify illicit discharges, immediate action can be taken to remove the pollutant and track the source.
End of MCM 1: Public Education, Outreach, and Involvement				
2: Illicit Discharge Detection and Elimination	2.1	Storm Sewer Map	Update map one time.	No. Though this BMP does not result in a direct reduction of pollutants, the map shows the location of each outfall.

MCM(s)	BMP#	BMP Name	Information Used & Quantity/Units	Does the BMP Demonstrate a Direct Reduction in Pollutants? (Answer Yes or No and explain)
	2.2	Illicit Discharge Detection Plan	Inspect 8 IDDE Zones.	Yes. When illicit discharges are observed, immediate action can be taken to remove pollutants and track the source.
	2.3	Illicit Discharge and Dumping Hotline	Maintain hotline on an ongoing basis.	Yes. When illicit discharges are reported, immediate action can be taken to remove pollutants and track the source.
	2.4	Illicit Discharge Ordinance Update	Review and update ordinance one time.	No. Though this BMP does not result in a direct reduction of pollutants, the ordinance sets city standards.
End of MCM 2: Illicit Discharge Detection and Elimination				
3: Construction Site Storm Water Runoff Control	3.1	Technical Manual for Construction Runoff	Review technical manual one time.	No. By continuously updating the technical manual it allows us to refine contractor guidelines and stormwater controls measures to directly reduce pollutants from construction sites.
	3.2	Site Plan Review Program	Review 100% of site plans and storm water pollution prevention plans for proposed construction.	No. Though this BMP does not result in a direct reduction of pollutants, reviewing plans confirms proper measures are incorporated into construction procedures and reduce sources of storm water pollution.
	3.3	Construction Site Inspection Program	Inspect 100% of active construction sites for sources of storm water pollution.	Yes. By inspecting construction sites, we can evaluate if proper BMPs are installed to effectively reduce sediment discharge and erosion.
	3.4	Construction Runoff Hotline	Maintain hotline on an ongoing basis.	Yes. When illicit discharges are reported, immediate action can be taken to remove the pollutant and track the source.

MCM(s)	BMP#	BMP Name	Information Used & Quantity/Units	Does the BMP Demonstrate a Direct Reduction in Pollutants? (Answer Yes or No and explain)
	3.5	Construction Storm Water Management Ordinance Update	Review and update ordinance one time, if needed.	No. Though this BMP does not result in a direct reduction of pollutants, enforcing requirements and procedures established by this ordinance will eventually reduce pollutants entering stormwater runoff.
	3.6	City Staff Training and Development	Attend one training regarding stormwater.	Yes. Trainings review the use of appropriate stormwater control measures and operating procedures that will eventually reduce sediment and pollutants.
End of MCM 3: Construction Site Storm Water Runoff Control				
4: Post-Construction Storm Water Management in New Development and Redevelopment	4.1	Technical Manual for Post-Construction Runoff	Review and update manual one time, if needed.	No. Though this BMP does not result in a direct reduction of pollutants, continuously refining contractor guidelines will eventually reduce sediment and pollutants.
	4.2	Site Plan Review Program for Post-Construction Runoff	Review 100% of site plans submitted.	No. By reviewing plans submitted, we can evaluate if proper post-construction BMPs are needed to reduce sediment discharge and erosion.
	4.3	Long-Term Inspection and Maintenance Plan for Post-Construction Runoff	Review 100% of long-term inspection and maintenance plans.	Yes. By inspecting post-construction runoff, we can monitor the quality of runoff and take swift action to remove any pollutants.

MCM(s)	BMP#	BMP Name	Information Used & Quantity/Units	Does the BMP Demonstrate a Direct Reduction in Pollutants? (Answer Yes or No and explain)
	4.4	Post-Construction Storm Water Management Ordinance Update	Review and update the ordinance one time.	No. Though this BMP does not result in a direct reduction of pollutants, enforcing requirements and procedures established by this ordinance will eventually reduce pollutants entering stormwater runoff.
End of MCM 4: Post-Construction Storm Water Management in New Development and Redevelopment				
5: Pollution Prevention/Good Housekeeping for Municipal Operations	5.1	Municipal Employee Pollution Prevention Manual	Review technical manual for new changes to accepted practices and regulations one time.	No. Though this BMP does not result in a direct reduction of pollutants, educating municipal employees will eventually reduce possible stormwater pollution impacts.
	5.2	Municipal Employee Training	Train city employees on pollution prevention techniques one time.	No. Though this BMP does not result in a direct reduction of pollutants, educating municipal employees will eventually reduce pollutants from various municipal operations.
	5.3	Street Sweeping	Develop and implement street sweeping procedures one time.	Yes. Street sweeping is an effective way to prevent pollutants from entering storm drains, watersheds, and rivers, while keeping streets and gutters looking great.
	5.4	Pest Management Program	Develop and implement pest management program procedures one time.	Yes. Helps promote Best Management Practices (BMPs) used to solve pest problems while minimizing risks to people and the environment.
	5.5	Disposal of Waste Materials	Review municipal solid and hazardous waste disposal procedures one time.	Yes. By evaluating proper disposal of solid waste and hazardous materials, immediate action can be taken to remove pollutants.

MCM(s)	BMP#	BMP Name	Information Used & Quantity/Units	Does the BMP Demonstrate a Direct Reduction in Pollutants? (Answer Yes or No and explain)
	5.6	Contractor Oversight Procedures	Review contractor oversight procedures one time.	Yes. By inspecting contractor procedures, we can evaluate if contractors are taking the proper measures to reduce pollution in the MS4.
	5.7	Inventory of Facilities and Stormwater Controls	Review inventory of facilities and stormwater controls one time.	No. Though this BMP does not result in a direct reduction in pollutants, developing an inventory of the city facilities and controls helps prioritize facilities containing pollutants and identify poor housekeeping practices, and discharge of pollutants, hence reducing pollutants.
	5.8	Assessment of Operations and Maintenance Activities	Evaluate 5 municipal operation and maintenance activities.	Yes. By inspecting city operations and maintenance activities, we can evaluate if proper measures are being taken to reduce pollution in the MS4.
End of MCM 5: Pollution Prevention/Good Housekeeping for Municipal Operations				

4. Provide the measurable goals for each of the MCMs, and an evaluation of the success of the implementation of the measurable goals (see **Example 3 in instructions**):

MCM(s)	BMP#	BMP Name	Measurable Goal(s)	Explain progress toward goal or how goal was achieved. If goal was not accomplished, please explain.
1: Public Education, Outreach, and Involvement	1.1	NOI and NOC Public Comment	SWMP and NOI were made available for public review	Met goal – made the City’s SWMP available to residents for review.
	1.2	Recurring Public Comment	Provide 12 opportunities for the public to comment in City council meetings	Did Not Meet goal – provided only 5 opportunities for the public to address council due to shortened reporting year.
	1.3	Brochures and Fact Sheets	Issue 2 brochures and fact sheets twice each year	Met goal – issued 2 articles to the public pertaining to storm water pollution.
	1.4	Household Hazardous Waste	Provide one opportunity for residents to dispose of household hazardous waste each year	Met goal – resident can contact the county for assistance with household hazardous waste disposal. No collections during reporting period.
	1.5	Stormwater Website	Update informational material on stormwater webpage one time each year	Met goal – the stormwater website was updated to reflect annual report year 6.
	1.6	Storm Drain Marking	Survey 50% of storm drain markings every two years, in even numbered years	Met goal – surveyed storm drain markings in Permit Year 6.
	1.7	Stormwater Public Awareness Survey	Issue 100 stormwater public awareness surveys every two years, in odd numbered years	Met goal – public awareness surveys were available via website throughout the year.
End of MCM 1: Public Education, Outreach, and Involvement				

MCM(s)	BMP#	BMP Name	Measurable Goal(s)	Explain progress toward goal or how goal was achieved. If goal was not accomplished, please explain.
2: Illicit Discharge Detection and Elimination	2.1	Storm Sewer Map	Storm sewer map will be updated every two years, in even numbered years.	Met goal – storm sewer map was reviewed and updated.
	2.2	Illicit Discharge Detection Plan	Inspect 8 zones each year	Did Not Meet goal – only able to inspect 6 of 8 zones for illicit discharges due to shortened reporting year.
	2.3	Illicit Discharge and Dumping Hotline	Inspect 100% of complaints received	N/A – No reported illicit discharges.
	2.4	Illicit Discharge Ordinance Update	Review Illicit Discharge Ordinance during permit year 4	Met goal – Illicit Discharge Ordinance was reviewed. No updates were needed.
End of MCM 2: Illicit Discharge Detection and Elimination				
3: Construction Site Storm Water Runoff Control	3.1	Technical Manual for Construction Runoff	Review technical manual for construction runoff during permit year 3	N/A – technical manual for construction runoff was reviewed and updated in year 3.
	3.2	Site Plan Review Program	Review 100% of site plans submitted	Met Goal – reviewed 1 of 1 site plans submitted.
	3.3	Construction Site Inspection Program	Inspect 100% of active sites	Met goal – inspected site 20 of 20 opportunities.

MCM(s)	BMP#	BMP Name	Measurable Goal(s)	Explain progress toward goal or how goal was achieved. If goal was not accomplished, please explain.
	3.4	Construction Runoff Hotline	Inspect 100% of complaints received	Met goal – maintained construction runoff hotline. No complaints were reported.
	3.5	Construction Storm Water Management Ordinance Update	Review storm water construction ordinance during permit year 4	Met goal – ordinance was updated and adopted.
	3.6	City Staff Training and Development	Attend one training each year	Met goal – attended 5 training during the permit year 7.
End of MCM 3: Construction Site Storm Water Runoff Control				
4: Post-Construction Storm Water Management in New Development and Redevelopment	4.1	Technical Manual for Post-Construction Runoff	Review technical manual for post-construction runoff during permit year 3	N/A – technical manual for post-construction runoff was reviewed and updated in year 3.
	4.2	Site Plan Review Program for Post-Construction Runoff	Review 100% of site plans for post-construction runoff each year	Met goal – reviewed 1 of 1 site plans submitted.

MCM(s)	BMP#	BMP Name	Measurable Goal(s)	Explain progress toward goal or how goal was achieved. If goal was not accomplished, please explain.
	4.3	Long-Term Inspection and Maintenance Plan for Post-Construction Runoff	Review 100% of long-term inspection & maintenance plans each year	N/A – No construction sites applicable for long-term inspection.
	4.4	Post-Construction Storm Water Management Ordinance Update	Review storm water post-construction ordinance during permit year 3	N/A – ordinance was reviewed during year 3.
End of MCM 4: Post-Construction Storm Water Management in New Development and Redevelopment				
5: Pollution Prevention/Good Housekeeping for Municipal Operations	5.1	Municipal Employee Pollution Prevention Manual	Review municipal employee pollution prevention manual each year	Met goal – manual was reviewed during reporting period. No updates were necessary.
	5.2	Municipal Employee Training	Conduct one municipal employee training each year	Met goal – 1 stormwater training conducted.
	5.3	Street Sweeping	5.3 Review street sweeping procedures during permit year 3	Met goal – street sweeping procedures were reviewed during reporting period. No updates were necessary.

MCM(s)	BMP#	BMP Name	Measurable Goal(s)	<p align="center">Explain progress toward goal or how goal was achieved.</p> <p align="center">If goal was not accomplished, please explain.</p>
	5.4	Pest Management Program	Review pest management procedures during permit year 3	Met goal – pest management procedures were reviewed during reporting period. No updates were necessary.
	5.5	Disposal of Waste Materials	Review disposal of waste material procedures each year	Met goal – disposal of waste material procedures were reviewed during reporting period. No updates were necessary.
	5.6	Contractor Oversight Procedures	Review contractor oversight procedures each year	Met goal – contractor oversight procedures were reviewed during reporting period. No updates were necessary. Observed activities of 1 contractor hired by City.
	5.7	Inventory of Facilities and Stormwater Controls	Review inventory of facilities and stormwater controls each year	Met goal – reviewed and updated city inventory of facilities and stormwater controls.
	5.8	Assessment of Operations and Maintenance Activities	Evaluate 5 municipal operations and maintenance activities	Did Not Meet goal – 3 observations conducted, was not able to meet goal during shortened reporting year.
End of MCM 5: Pollution Prevention/Good Housekeeping for Municipal Operations				

C. Stormwater Data Summary

Provide a summary of all information used, including any lab results (if sampling was conducted) to assess the success of the SWMP at reducing the discharge of pollutants to the MEP. For example, did the MS4 conduct visual inspections, clean the inlets, look for illicit discharge, clean streets, look for flow during dry weather, etc.?

It has been determined that all current BMPs selected for the SWMP are appropriate against reducing the discharge of pollutants entering storm water. Monitoring includes periodic observation of the City's storm water features in accordance with the schedule set forth in the IDDE Plan (BMP 2.2). As a result of the implementation of these BMP's, a minimal quantity and frequency of pollutants in storm water discharges has been noted and documented.

D. Impaired Waterbodies

1. Identify whether an impaired water within the permitted area was added to the latest EPA-approved 303(d) list or the Texas Integrated Report of Surface Water Quality for CWA Sections 305(b) and 303(d). List any newly-identified impaired waters below by including the name of the water body and the cause of impairment.

The latest EPA-approved §303(d) list does not identify any new impaired waters were added within the permitted area.

2. If applicable, explain below any activities taken to address the discharge to impaired waterbodies, including any sampling results and a summary of the small MS4's BMPs used to address the pollutant of concern.

N/A

3. Describe the implementation of targeted controls if the small MS4 discharges to an impaired water body with an approved TMDL.

N/A

4. Report the benchmark identified by the MS4 and assessment activities:

Benchmark Parameter (Ex: Total Suspended Solids)	Benchmark Value	Description of additional sampling or other assessment activities	Year(s) conducted
N/A	N/A	N/A	N/A

5. Provide an analysis of how the selected BMPs will be effective in contributing to achieving the benchmark:

- a. *The number of sources of bacteria will be identified and eliminated;*
- b. *The number of incidents regarding illegal dumping will be reduced;*
- c. *An increase of illegal dumping reporting;*
- d. *The number of educational opportunities conducted, focusing on the reduction or elimination of bacteria in storm water discharges; and*
- e. *An increase of illicit discharge detection through dry screening or other selected detection methods.*

Benchmark Parameter	Selected BMP	Contribution to achieving Benchmark
N/A	N/A	N/A

6. If applicable, report on focused BMPs to address impairment for bacteria:

Description of bacteria-focused BMP	Comments/Discussion
N/A	N/A

7. Assess the progress to determine BMP’s effectiveness in achieving the benchmark.

For example, the MS4 may use the following benchmark indicators:

- number of sources identified or eliminated;
- number of illegal dumpings;
- increase in illegal dumping reported;
- number of educational opportunities conducted;
- reductions in sanitary sewer flows (SSOs); /or
- increase in illegal discharge detection through dry screening.

Benchmark Indicator	Description/Comments
N/A	N/A

E. Stormwater Activities

Describe activities planned for the next reporting year:

Attached is an important schedule summary indicating all storm water activities which are currently planned for the upcoming plan year. MS4 will implement new SWMP submitted to TCEQ.

F. SWMP Modifications

1. The SWMP and MCM implementation procedures are reviewed each year.

Yes No

2. Changes have been made or are proposed to the SWMP since the NOI or the last annual report, including changes in response to TCEQ's review.

Yes No

If "Yes," report on changes made to measurable goals and BMPs:

Note: If changes include additions or substitutions of BMPs, include a written analysis explaining why the original BMP is ineffective or not feasible, and why the replacement BMP is expected to achieve the goals of the original BMP.

3. Explain additional changes or proposed changes not previously mentioned (i.e. dates, contacts, procedures, annexation of land, etc.).

N/A

G. Additional BMPs for TMDLs and I-Plans

Provide a description and schedule for implementation of additional BMPs that may be necessary, based on monitoring results, to ensure compliance with applicable TMDLs and implementation plans.

Based on monitoring data, it has been determined that current BMPs implemented under the SWMP are adequate to ensure compliance with all applicable TMDL's and implementation plans. No additional BMPs are necessary at this time. This determination will continually be reviewed and assessed on an annual basis, and BMPs will be added or amended at that time if the need for additional or modified BMPs is necessary to ensure compliance with all applicable TMDL's and implementation plans.

H. Additional Information

1. Is the permittee relying on another entity to satisfy any permit obligations?

Yes No

If "Yes," provide the name(s) of other entities and an explanation of their responsibilities (add more spaces or pages if needed).

Name and Explanation: N/A

Name and Explanation: N/A

Name and Explanation: N/A

Name and Explanation: N/A

2.a. Is the permittee part of a group sharing a SWMP with other entities?

Yes No

2.b. If "yes," is this a system-wide annual report including information for all permittees?

Yes No

If "Yes," list all associated authorization numbers, permittee names, and SWMP responsibilities of each member (add additional spaces or pages if needed):

Authorization Number:	<u>N/A</u>	Permittee:	<u>N/A</u>
Authorization Number:	<u>N/A</u>	Permittee:	<u>N/A</u>
Authorization Number:	<u>N/A</u>	Permittee:	<u>N/A</u>
Authorization Number:	<u>N/A</u>	Permittee:	<u>N/A</u>

I. Construction Activities

1. The number of construction activities that occurred in the jurisdictional area of the MS4 (Large and Small Site Notices submitted by construction site operators):

1

2a. Does the permittee utilize the optional seventh MCM related to construction?

Yes No

2b. If "yes," then provide the following information for this permit year:

The number of municipal construction activities authorized under this general permit	
The total number of acres disturbed for municipal construction projects	N/A

Note: Though the seventh MCM is optional, implementation must be requested on the NOI or on a NOC and approved by the TCEQ.

J. Certification

If this is this a system-wide annual report including information for all permittees, each permittee shall sign and certify the annual report in accordance with 30 TAC §305.128 (relating to Signatories to Reports).

I certify under penalty of law that this document and all attachments were prepared under my direction or supervision in accordance with a system designed to assure that qualified personnel properly gathered and evaluated the information submitted. Based on my inquiry of the person or persons who manage the system, or those persons directly responsible for gathering the information, the information submitted is, to the best of my knowledge and belief, true, accurate, and complete. I am aware that there are significant penalties for submitting false information, including the possibility of fine and imprisonment for knowing violations.

Name (printed): Dr. Brian Rowland Title: City Manager

Signature:  Date: 3/27/2026

Name of MS4 City of Kirby

If you have questions on how to fill out this form or about the Stormwater Permitting program, please contact us at 512-239-4671.

Individuals are entitled to request and review their personal information that the agency gathers on its forms. They may also have any errors in their information corrected. To review such information, contact us at 512-239-3282.

Kirby Comprehensive Schedule for Storm Water Management Plan Implementation Program

BMP No.	Scheduling Item	2024	2025					2026				2027				2028				2029				
		August 15, 2024	February 11, 2025	April 23, 2025	July 23, 2025	November 23, 2025	January 23, 2026	April 23, 2026	July 23, 2026	November 23, 2026	January 23, 2026	April 23, 2027	July 23, 2027	November 23, 2027	January 23, 2027	April 23, 2028	7/23/2029	November 23, 2028	January 23, 2029	April 23, 2029	July 23, 2029	November 23, 2029	December 31, 2029	
	TCEQ issued TPDES General Permit No. TXR040000																							
	Deadline Submittal Date for City NOI and SWMP IP																							
1.1	Stormwater Website																							
1.2	Storm Drain Marking																							
1.3	Brochures and Fact Sheets																							
2.1	Stormwater Website																							
2.2	Storm Drain Marking																							
2.3	Stormwater Public Awareness Survey																							
3.1	Storm Sewer Map																							
3.2	Illicit Discharge Detection Plan																							
3.3	Illicit Discharge and Dumping Hotline																							
3.4	Illicit Discharge Ordinance																							
4.1	Technical Manual for Construction Runoff																							
4.2	Site Plan Review Program																							
4.3	Construction Site Inspection Program																							
4.4	Construction Runoff Hotline																							
4.5	Construction Storm Water Management Ordinance																							
4.6	City Staff Training and Development																							
5.1	Technical Manual for Post-Construction Runoff																							
5.2	Site Plan Review Program for Post-Construction Runoff																							
5.3	Long-Term Insp. and Maint. Plan for Post-Constr. Runoff																							
5.4	Post-Construction Storm Water Management Ordinance																							
6.1	Municipal Employee Pollution Prevention Manual																							
6.2	Municipal Employee Training and Education																							
6.3	Street Sweeping																							
6.4	Pest Management Program																							
6.5	Disposal of Waste Materials																							
6.6	Contractor Oversight Procedures																							
6.7	Inventory of Facilities and Stormwater Controls																							
6.8	Assessment of Operations and Maintenance Activities																							
	Deadline for Implementing SWMP																							



Givler Engineering, Inc.
 515 Busby Drive
 San Antonio, Texas 78209

- Milestone Date Established by TCEQ
- Planning and/or Study to Prepare for Implementation
- Implementation


*** Exact scheduling for this item is not controlled by the city. The schedule for this item represents an educated guess rather than a commitment.

Exhibit A

Supporting Documents for MCM 1


- 1.2 Recurring Public Comment
- 1.3 Brochures and Fact Sheets
- 1.4 Household Hazardous Waste
- 1.5 Stormwater Website

2025

Date	Meeting Type	Regular Meeting File	Approved Regular Minutes	Special Meeting File	Approved Special Minutes	Other File	Meeting Audio	Meeting Video
January 9, 2025	City Council Agenda		—	—	—	—	—	—
January 23, 2025	City Council Agenda			—	—	—	—	—
February 3, 2025	City Council Special Meeting Agenda	—	—			—	—	—
February 13, 2025	City Council Regular Meeting Agenda			—	—	—	—	—
February 27, 2025	City Council Agenda			—	—	—	 Part 1  Part 2	
March 13, 2025	Regular City Council Packet			—	—	—	—	—
March 13, 2025	Regular City Council Packet	—	—	—	—	—	 Part 2	—
March 27, 2025	Regular City Council Meeting			—	—	—	—	—
April 10, 2025	Regular City Council Meeting			—	—	—	—	—
April 17, 2025	Regular City Council Meeting			—	—	—	—	—
April 17, 2025	Senior Center Board of Directors Special Meeting	—			—	—	—	—
April 17, 2025	Regular City Council Meeting	—		—	—	 View PDF	—	—
May 8, 2025	Regular City Council Meeting			—	—	—	—	—

May 14, 2025	City Council Special Meeting	—	—			—	—	—
May 22, 2025	Regular City Council Meeting			—	—	—	—	—
June 12, 2025	Ordinance 2025 - 1025	—	—	—	—	 View PDF	—	—
June 12, 2025	Regular City Council Meeting			—	—	—	—	—
June 17, 2025	Special City Council Meeting	—	—			 View PDF	—	—
June 17, 2025	Special City Council Meeting	—	—		—	 View PDF	—	—
June 25, 2025	Special City Council Meeting	—	—			—	—	—
June 26, 2025	Regular City Council Meeting			—	—	 View PDF	—	—
July 2, 2025	Special City Council Meeting	—	—			—	—	—
July 10, 2025	Regular City Council Meeting	—		—	—	 View PDF	—	—
July 10, 2025	Regular City Council Meeting		—	—	—	—	—	—
July 16, 2025	Special City Council Meeting	—	—			—	—	—
July 17, 2025	Special City Council Meeting	—	—			—	—	—
July 24, 2025	Regular City Council Meeting			—	—	 View PDF	—	—
July 25, 2025	Notice of Possible Quorum - City Council	—	—		—	—	—	—

	Leadership Retreat								
July 26, 2025	Notice of Possible Quorum - City Council Leadership Retreat	—	—		—	—	—	—	—
August 14, 2025	Regular City Council Meeting			—	—	 View PDF	—	—	—
August 14, 2025	Crime Control Budget Proposal		—	—	—	—	—	—	—
August 28, 2025	Regular City Council Meeting			—	—	 View PDF	—	—	—
August 28, 2025	Budget Workshop	—	—		—	 View PDF	—	—	—
September 9, 2025	Special City Council Meeting	—	—			—	—	—	—
September 11, 2025	Public Hearing		—	—	—	—	—	—	—
September 11, 2025	Regular City Council Meeting			—	—	—	—	—	—
September 16, 2025	Budget Workshop		—		—	—	—	—	—
September 19, 2025	Special Meeting	—	—			—	—	—	—
September 25, 2025	Regular City Council Meeting			—		 View PDF	—	—	—
September 30, 2025	Special Meeting	—	—			—	—	—	—
October 9, 2025	Regular City Council Meeting			—	—	—	—	—	—
October 17, 2025	Special City Council Meeting	—	—			—	—	—	—
October 23, 2025	Regular City Council Meeting			—	—	—	—	—	—

November 6, 2025	Regular City Council Meeting			—	—	—	—	—
November 13, 2025	Regular City Council Meeting - No Meeting Due to Lack of Quorum			—	—	—	—	—
December 4, 2025	Regular City Council Meeting			—	—	—	—	—
December 11, 2025	Regular City Council Meeting			—	—	—	—	—

2024

2023

2022

2021

2020

2019

2018

2017

REDUCE STORM WATER POLLUTION



ILLEGAL DUMPING

Illegal dumping is the disposal of waste in an unpermitted area, such as in the back of a yard, along a stream bank, in an alley, in a public right-of-way or at other off-road areas. Pouring liquid wastes or disposing of trash down storm drains is a form of illegal dumping that can also qualify as an illicit discharge.

Litter is often the result of poorly managed trash. This trash is carried by wind or rain into a storm sewer system or directly to a lake, stream, or river.

TIPS FOR DEALING WITH TRASH

- *Never litter. Put trash in the appropriate bins and do not leave trash next to- or on top of an overflowing bin.*
- *Take these steps to prevent trash from escaping from your outdoor trash bins on collection day:*
 - *Keep your lid closed and do not overflow the trash bin.*
 - *Put trash outside shortly before pickup.*
- *The city has authority to assess fines for illegal dumping.*

For more information on stormwater or to report any pollution in our streets or storm drains, please call the Stormwater Hotline:

(210)342-3991

This tip is based on information from the U.S. Environmental Protection Agency and was adapted by

GIVLER
Engineering Inc.

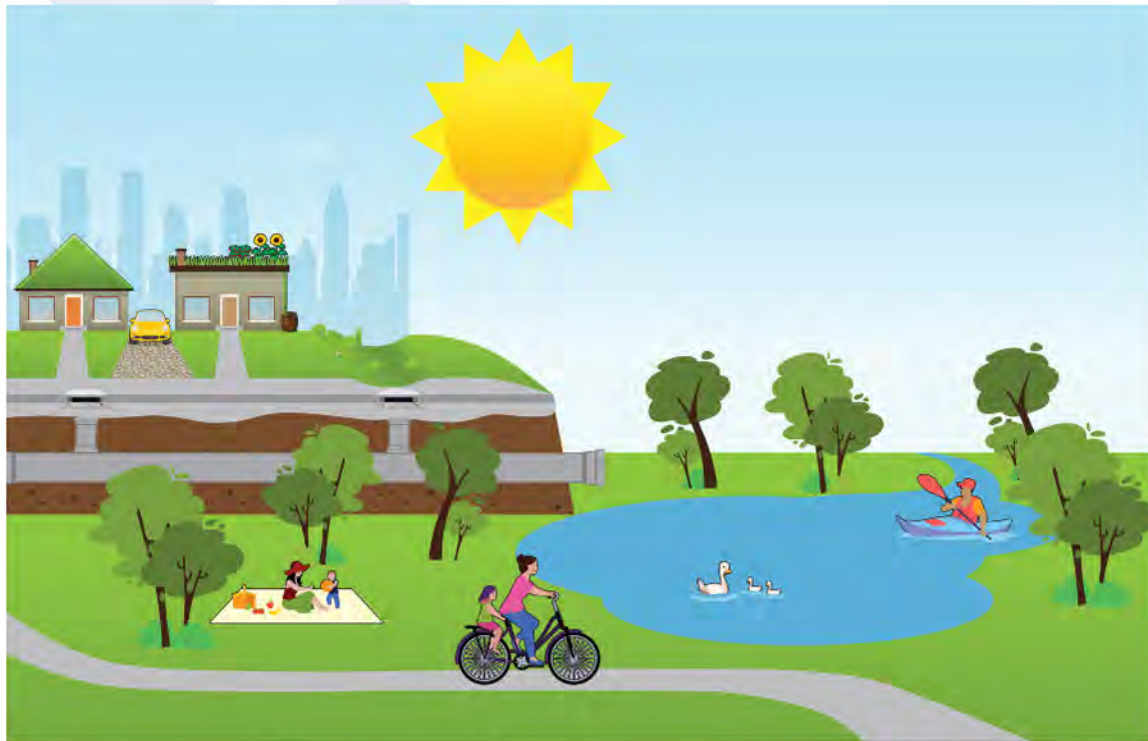
515 Busby Drive, San Antonio, TX 78209

INNOVATIVE SOLUTIONS BENEFIT THE COMMUNITY

As storm sewer systems across the country age and continue to be tested by extreme weather, many communities are investing in green infrastructure as a resilient and effective approach to managing the impact of stormwater. Green infrastructure practices such as rain

gardens, green roofs, and permeable pavements help reduce and treat stormwater where the rain falls, while providing numerous community benefits.

Innovative green infrastructure solutions are wise investments that complement more traditional sewer system components. Together they can work efficiently and effectively to manage the impact of stormwater and bring value to communities.



<https://www.kirbytx.org/public-notice/>



BE STORMWATER SMART

Know What Happens When It Rains

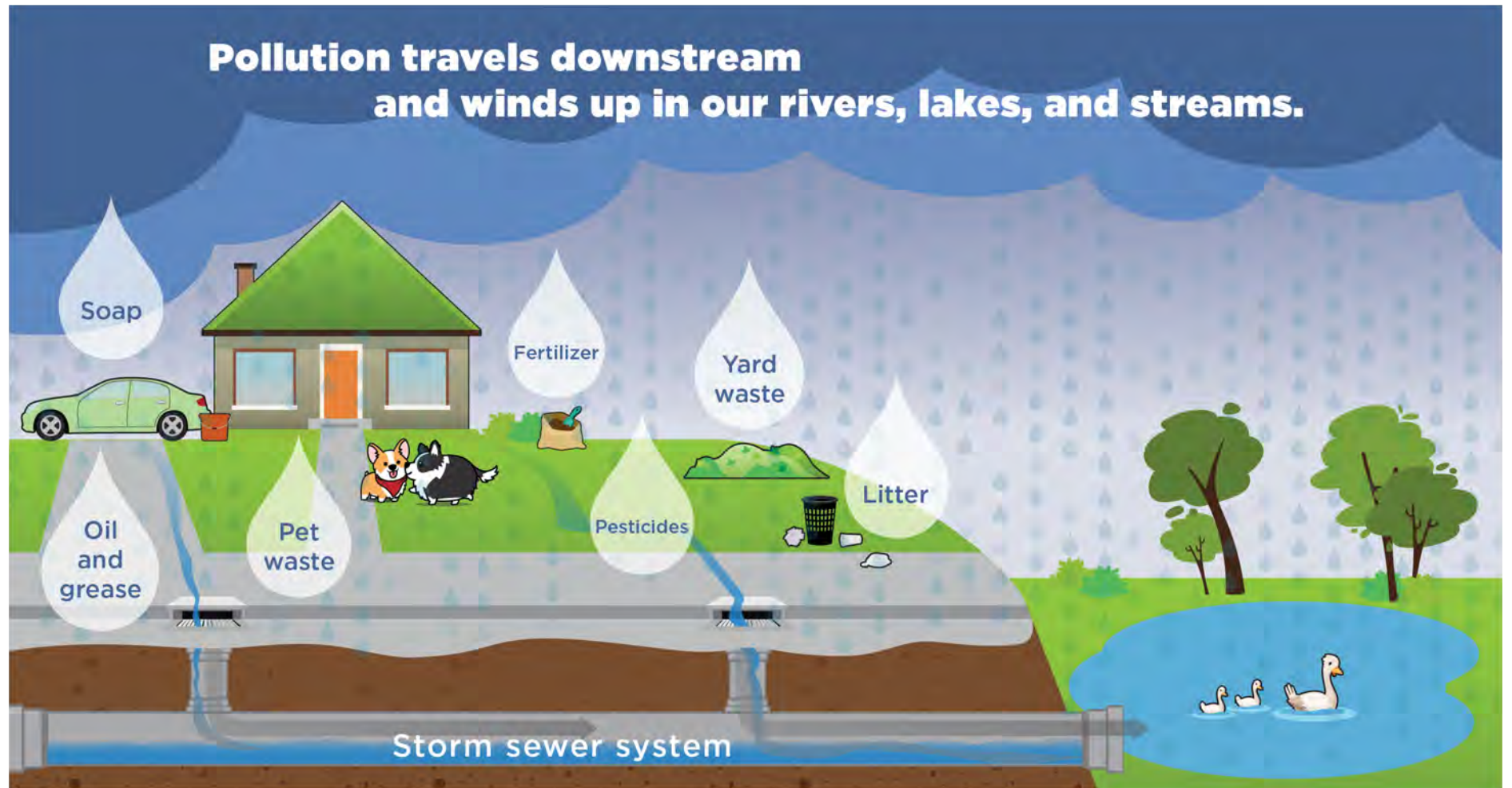


Have you ever watched water run down a gutter or pool on the side of the road during a storm? What happens to all the water? Most stormwater—the water from rain and snow—runs over the land and down a storm drain. The water flows through a network of underground pipes and open channels directly to our streams, rivers, and lakes. That’s why keeping stormwater clean is vital to the health of our waterways, community, and even our economy.

KNOW WHAT’S IN THE FLOW

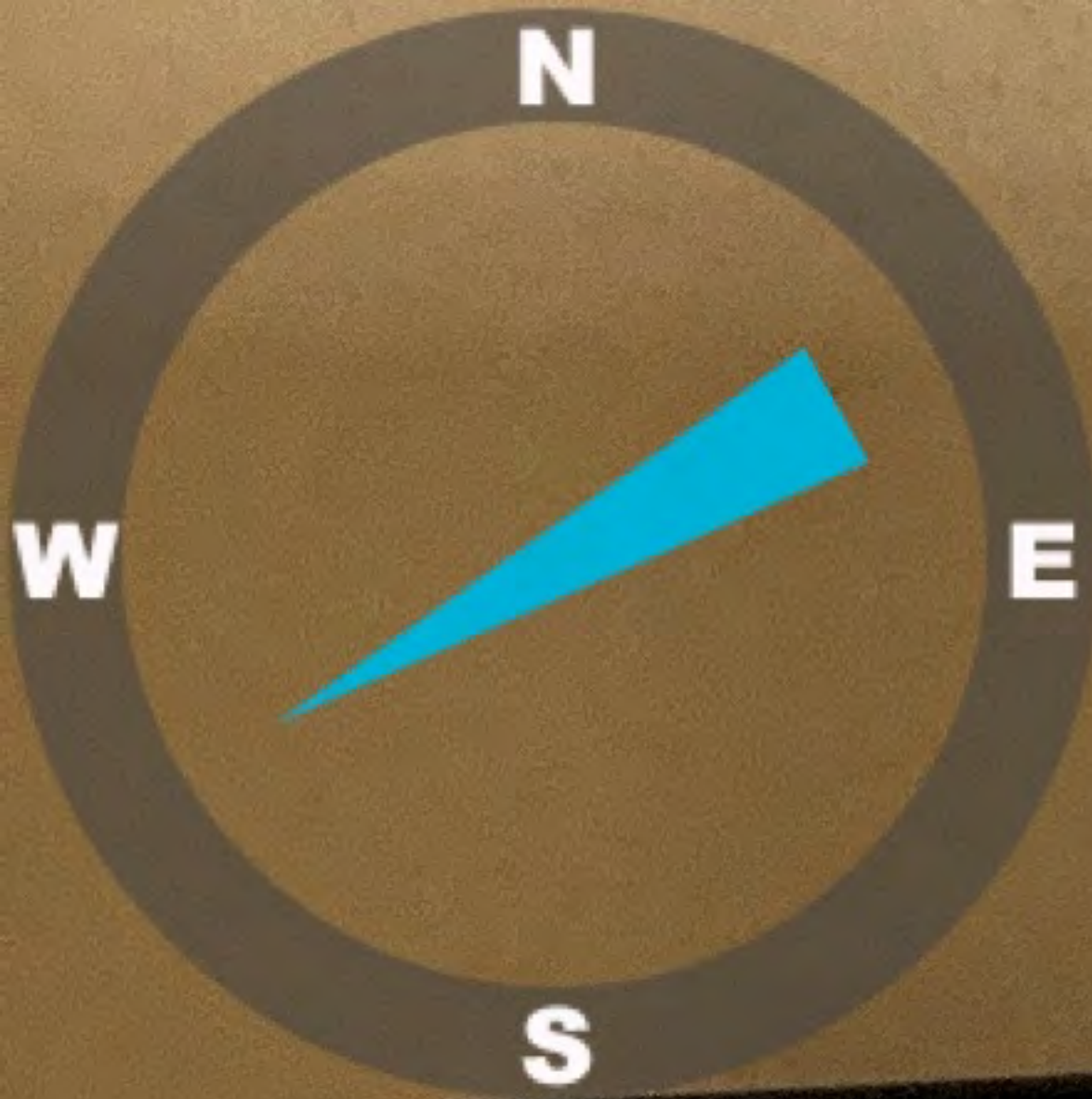
When water flows off our property after a storm, what's on our lawns, roads, buildings, and parking lots flows with it. The water that doesn't soak into the ground picks up oil, litter, fertilizer, and other unhealthy items along its way that wind up in our rivers, lakes, and streams.

Water pollution can start on your property in ways you cannot see, but that affect your health and the whole community downstream. Watching what we put in our storm drains and



on our property makes our rivers, lakes, and streams cleaner, healthier, and more enjoyable. And by investing in solutions to manage stormwater, we help make our community a safer, greener, healthier, and more enjoyable place to live.

Stormwater is the water that flows over the ground after it rains, snows, or sleet. It can become polluted as it runs over hard surfaces and flows downstream.



Discover **STORM WATER**

Education is essential to changing people's behavior. Signs and markers near storm drains warn residents that pollutants entering the drains will be discharged into our local waterbodies.



CONSTRUCTION

Construction sites can cause excessive amounts of sediment and debris to be carried into the stormwater system. Construction vehicles can leak fuel, oil, and other harmful fluids that can be picked up by stormwater and deposited into local waterbodies.

- Divert stormwater away from disturbed or exposed areas of the construction site.
- Install silt fences, vehicle mud removal areas, vegetative cover, and other sediment and erosion controls. Properly maintain controls, especially after rainstorms.
- Prevent soil erosion by minimizing disturbed areas during construction projects and seed and mulch soil as soon as possible.



COMMERCIAL

Dirt, oil, and debris that collect in parking lots and paved areas can be washed into the storm sewer system and eventually into local waterbodies.

- Sweep up litter and debris from sidewalks, driveways and parking lots, especially around storm drains.
- Cover grease storage and dumpster's and keep them clean to avoid spills.



AUTOMOTIVE FACILITIES

Uncovered fueling stations allow spills to be washed into storm drains. Cars waiting to be repaired can leak fuel, oil, and other harmful fluids that can be picked up by stormwater.

- Clean up spills immediately and properly dispose of cleanup materials.
- Provide cover over fueling stations and design or retrofit facilities for spill containment.
- Properly maintain fleet vehicles to prevent oil, gas, and other discharges from being washed into local waterbodies.



RESIDENTIAL

Recycle or properly dispose of household products that contain chemicals, such as insecticides, pesticides, paint, solvents, used motor oil, and other auto fluids. Don't pour them onto the ground or into storm drains.



LAWN CARE

Excess fertilizers and pesticides applied to lawns and gardens wash off and pollute streams. In addition, yard clippings and leaves can wash into storm drains and contribute nutrients and organic matter to streams.

- Don't overwater your lawn. Consider using a soaker hose instead of a sprinkler.
- Use pesticides and fertilizers sparingly. When use is necessary, use these chemicals in the recommended amounts. Use organic mulch or safer pest control methods whenever possible.
- Compost or mulch yard waste. Don't leave it in the street or sweep it into storm drains or streams.
- Cover piles of dirt or mulch being used in landscaping projects.



PET WASTE

Pet waste can be a major source of bacteria and excess nutrients in local waters. Leaving pet waste on the ground increases public health risks by allowing harmful bacteria and nutrients to wash into the storm drain and eventually into local waterbodies.

- When walking your pet, remember to pick up the waste and dispose of it properly.
- Flushing pet waste is the best disposal method.



AUTO CARE

Washing your car and degreasing auto parts at home can send detergents and other contaminants through the storm sewer system. Dumping automotive fluids into storm drains has the same result as dumping the materials directly into a waterbody.

- Use a commercial car wash that treats or recycles its wastewater, or wash your car on your yard so the water infiltrates into the ground.
- Repair leaks and dispose of used auto batteries at designated drop-off or recycling locations.



RESIDENTIAL LANDSCAPING

Permeable Pavement - Traditional concrete and asphalt don't allow water to soak into the ground. Instead these surfaces rely on storm drains to divert unwanted water. Permeable pavement systems allow rain and snowmelt to soak through, decreasing stormwater runoff.

Rain Barrels - You can collect rainwater from rooftops in mosquito proof containers. The water can be used later on lawn or garden areas.

Rain Gardens and Grassy Swales - Specially designed areas planted with native plants can provide natural places for rainwater to collect and soak into the ground. Rain from rooftop areas or paved areas can be diverted into these areas rather than into storm drains.

Vegetative Filter Strips - Filter strips are areas of native grass or plants created along roadways or streams. They trap the stormwater pollutants from driveways and streets.



AGRICULTURE

Lack of vegetation can lead to erosion. Overgrazed pastures can also contribute excessive amounts of sediment to local waterbodies. Excess fertilizers and pesticides can lead to destructive algae blooms and poison aquatic animals. Livestock in streams can contaminate waterways with bacteria, making them unsafe for human contact.

- Keep livestock away from streambanks and provide them a source away from waterbodies.
- Store and apply manure away from waterbodies and in accordance with a nutrient management plan.
- Vegetate riparian areas along waterways.
- Rotate animal grazing to prevent soil erosion in fields.
- Apply fertilizers and pesticides according to label instructions to minimize pollution.

**AFTER THE STORM... REMEMBER:
WHEN IT RAINS... IT DRAINS**

For more stormwater information, please contact us at galindo@givlerengineering.com or call 210-342-3991, ext. 225.

Based on literature by the United States Environmental Protection Agency, Adapted by:



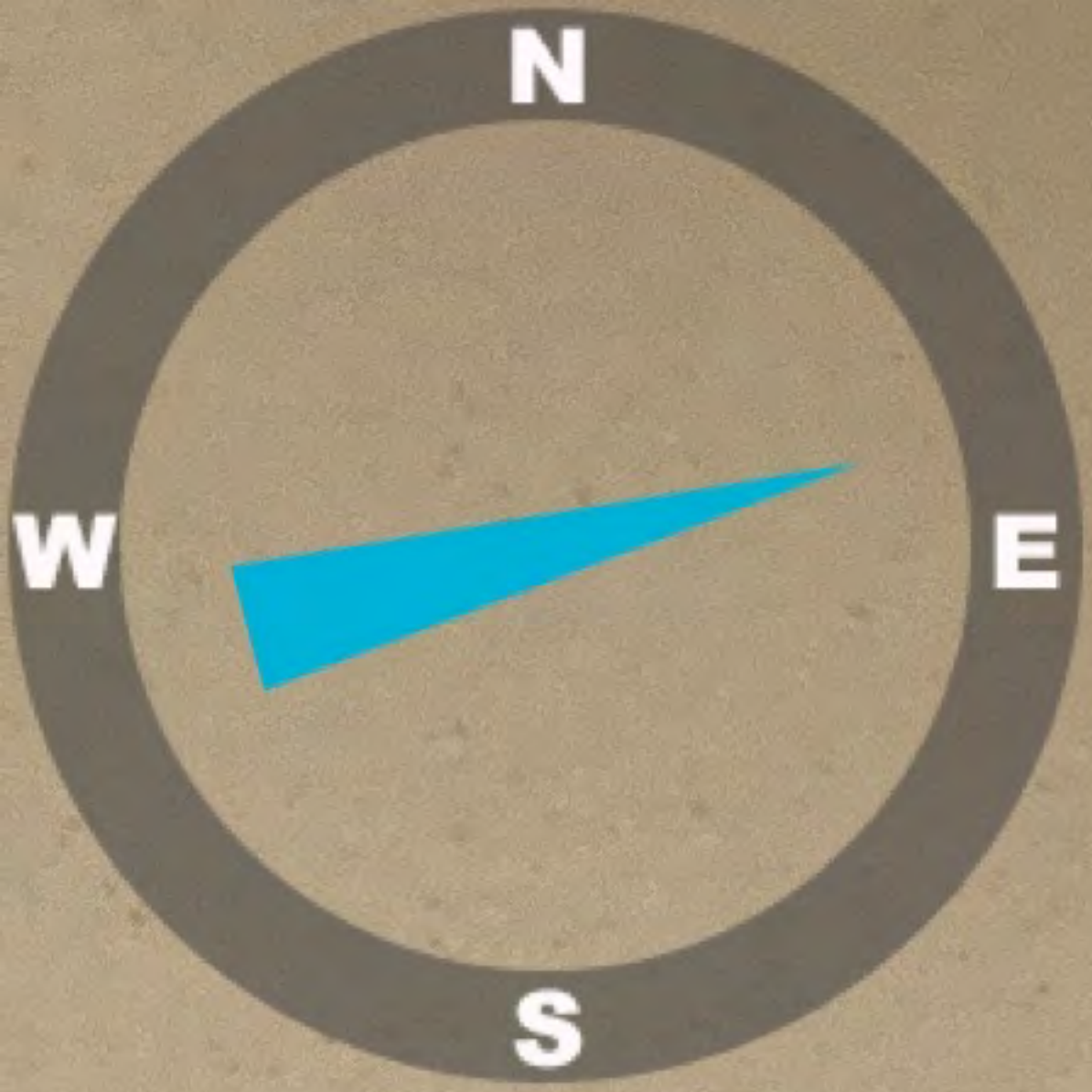
Texas Registration #F-002573
515 Busby Drive, Suite 101
San Antonio, TX 78219

Jan 14, 2025 at 2:32:41 PM
N 29° 28' 18", W 98° 22' 55"

240° SW

112 Bauman St
Kirby TX 78219

GEI



Be Watershed WISE! Do you know which watershed you live in? Find out by visiting www.sara-tx.org!

Help Protect Your Watershed!

A watershed is an area of land that drains to a common point, usually a river, creek or stream. We all live in a watershed.

SAN ANTONIO RIVER AUTHORITY
Leaders in Watershed Solutions

1 Take your groceries home in reusable bags. Disposable plastic bags are wasteful and sometimes end up in our creeks and rivers.

2 If your parents work on the car at home, make sure there are containers under the car to catch any drips.

3 When walking your pets, pick up after them and throw the waste in the garbage. Rain can wash pet waste into our creeks and rivers, where it doesn't belong.

4 Ask your parents to wash the car at a car wash or in the grass, not on the driveway. Dirt and chemicals from cars can run off the driveway into our creeks and rivers.

5 Recycle everything you can and be sure to put other trash in a garbage can with a lid. This will keep loose trash out of our creeks and rivers.

6 When you mow the lawn, leave the grass clippings on the lawn or throw them away in trash bags. Don't sweep or blow them into the street, or they could end up in our creeks and rivers.

Learn more at www.sara-tx.org

Rain washes pollutants into the closest river or creek. These pollutants have a big impact on water quality in our watersheds.

Keeping our yards and streets clean keeps our rivers and creeks clean! Be Watershed Wise!

Jan 14, 2025 at 2:32:45 PM
N 29° 28' 18", W 98° 22' 55"

75° E

112 Bauman St
Kirby TX 78219

GEI

CITY OF KIRBY

HOUSEHOLD HAZARDOUS WASTE COLLECTION EVENT

March 8th, 2025

The collection will be from 8:00am until reaches full capacity
Hazardous waste disposal containers will be located at Friendship Park 5745 Binz Engleman Road . Drive into the parking lot and follow instructions given by the attendants for unloading of hazardous waste.

Open to all Residents of the City of Kirby. Participants must provide proof of residency in Kirby (i.e.Driver's License, Utility Bills, Water Bill, ect) before disposing of hazardous waste.

WHAT TO BRING?

Materials Accepted - The containers must be 5 gallon or less in size.

- Pesticides
- Herbicides
- Paint: Oil, Stain, Varnish
- Acids
- Flea Sprays/ Bug Sprays
- Pool Chemicals
- Herbicides
- Cooking Oil
- Antifreeze
- Disinfectants
- Rug & Upholstery Cleaners
- Household Cleaners
- Batteries (Automotive) or smaller
- Fluorescent/ CFL Bulbs
- Abrasive Cleaners or Powders
- Transmission Fluids
- Used Motor Oils & Filters
- Photographic Chemicals

WHAT NOT TO BRING?

LIST OF UNACCEPTABLE ITEMS:

- Explosives
- Radioactive Material
- Pharmaceuticals/
Medicine
- Smoke Detectors
- Compressed Gas/Cylinders
- Ammunition
- Medical Waste/Sharps
- Tires/ Rims
- Electronics
- Older Tube style TV's
- Gunpowder
- Business Waste/Farm Waste/
Commercial Waste
- White Goods (Refrigerators, Freezers,
Washers, Dryers)
- Household Trash

SAFETY TIPS!!!

How should I prepare materials for transport to the collection site?

- Bring products in their original containers-Do not mix products!
- Make sure containers are properly sealed and labeled correctly.
- If the containers leaks, pack in larger container and use absorbent, such as cat litter, to soak up leaks.
- If you do not know what it is, mark it "unknown"
- If possible, place materials in cardboard boxes-boxes with dividers make for good packing.
- Place materials in areas away from drivers and passengers.



Municipal Utilities

[Kirby History](#)

[FAQS](#)

[Report a Problem](#)



[Pay My Bill](#)

[Water Ordinance](#)

[Establish Service](#)

[Discontinue Service](#)

RESIDENT PORTAL- REQUEST FOR WORK ORDER

WINTER AVERAGING NOVEMBER 15 – FEBRUARY 15

Monthly sewer bill to residential (one and two family residence) customers shall be computed on the basis of “winter averaging” sewer charge period. The winter averaging of sewer charge is the period of water consumption during the three (3) consecutive billing cycles commencing on November 15th and terminating before February 15th of each year. The City of Kirby shall establish monthly sanitary sewer service charges for customers based upon their average of the monthly

water consumption during the three (3) consecutive billing cycles. The customer must receive sanitary sewer service at one location during the entire three (3) consecutive billing cycles in order to establish a “winter average.” Customers that have not yet established a “winter average” or transfer service shall be billed based on one hundred percent (100%) of water consumption.

TIPS FOR UTILITY BILLING PAYMENTS

To pay your water bill you must create a login.

Under the Utility Billing tab, you must create your login by clicking on the Member Registration link.

After filling out required information, an email will be sent to the confirmed email address you gave under member registration.

You then login with your email and newly formed password (password created during member registration).

- No partial payments will be accepted.
- If you pay your bill after the 25th of the month your account may reflect the new bill; therefore, you will have to pay the current and new bill.
- Online payments will not be accepted on the Wednesday following the 27th of each month during our Water Cutoff Process.
- Payments received after 5:00 pm will be processed the following business day. (If services are disconnected for non-payment and payment is made after business hours services will be restored the following business day)
- All payments will include a \$2.50 Online Payment Fee

Givler Engineering Be Stormwater Smart



[Rebate Program](#)

[Request For Disclosure](#)

[2023 Water Quality Report](#)

[2024 Water Quality Report](#)

[Kirby Stormwater Annual Report 2024 – 2025](#)

[TCEQ 2025](#)

Exhibit B

Supporting Documents for MCM 2

- 2.1 Storm Sewer Map
- 2.2 Illicit Discharge Detection Inspections

LEGEND

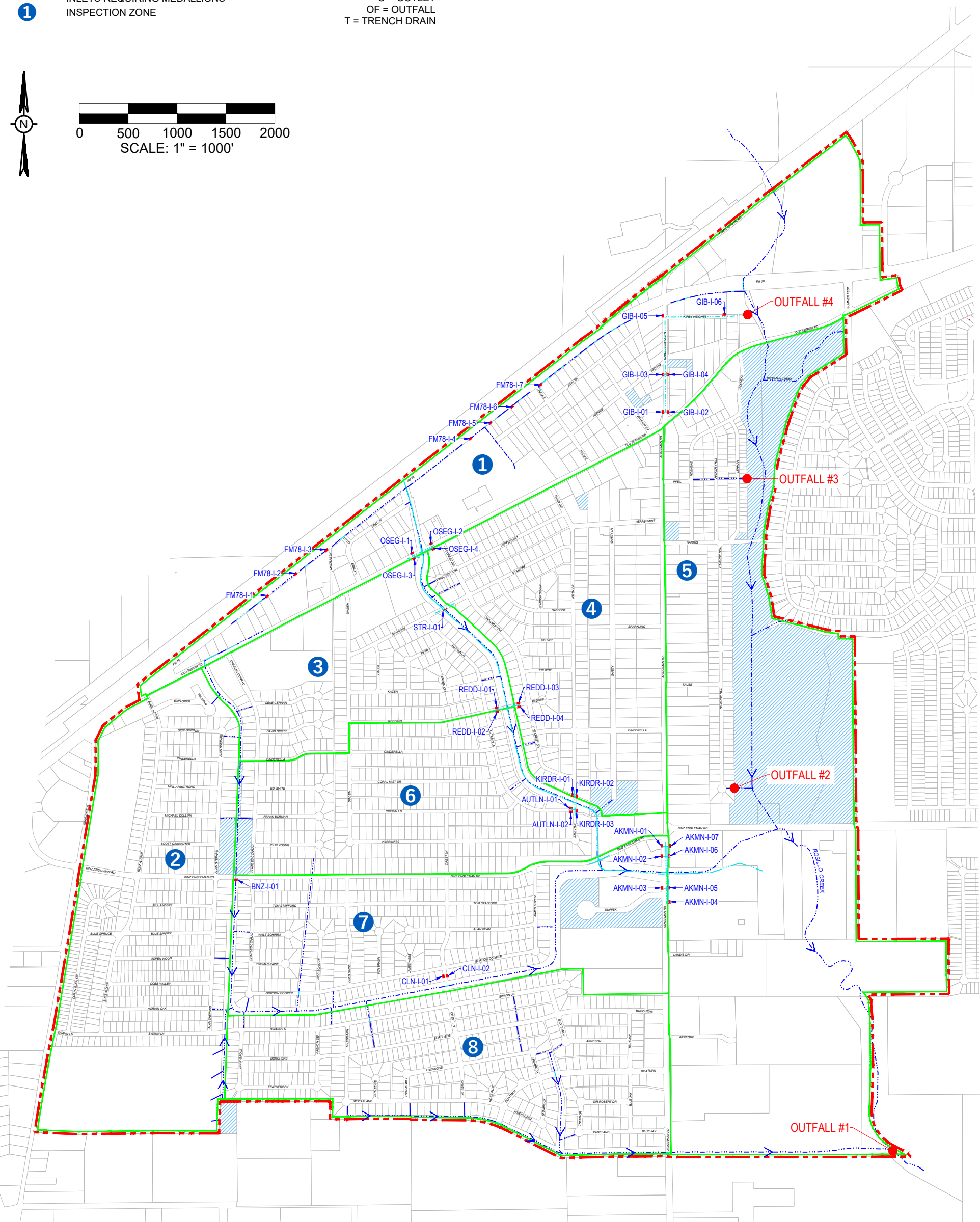
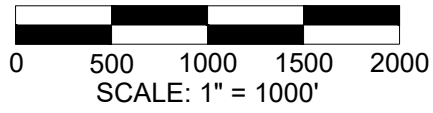
- - - - - CHANNEL
- - - - - STORM DRAIN PIPE OR CULVERT
- - - - - CITY LIMITS
- CITY OWNED FACILITIES
- INLETS
- M INLETS REQUIRING MEDALLIONS
- 1 INSPECTION ZONE

STORM DRAIN INVENTORY CODE

STREET CODE → MCC-I-10(M) ← REQUIRES MEDALLION

TYPE OF STRUCTURE → STRUCTURE NO.

- I = INLET
- J = JUNCTION BOX
- O = OUTLET
- OF = OUTFALL
- T = TRENCH DRAIN



C:\Users\kyle\OneDrive\Engineering\GIS - Documents\Projects\TX\KIRBY\KIRBY-001 - Phase 2 Storm Water Drawings\Sheets\2025 - Kirby Storm Water Map.dwg

UPDATED STORMDRAINS	01/2025
UPDATED STORMDRAINS	12/2021
UPDATED INLETS	10/2020
UPDATED INLETS	09/2018
REVISION	DATE
TX Registration #F-002573 515 Busby Drive San Antonio, Texas 78209 Phone: (210) 342-3991	

CLIENT:	CITY OF KIRBY
PROJECT NAME:	PHASE II STORM WATER
PHASE:	STORMWATER IMPLEMENTATION
PROJECT LOCATION:	CITY OF KIRBY
PROJECT NUMBER:	KIRBY-001

DESIGNED BY:	AG	CHECKED BY:	LDG
DRAWN BY:	KHS	DATE:	01/16/2025
SHEET TITLE:			
STORM WATER MAP			
SHEET NUMBER:			
01		OF	
01			

KIRBY STORM WATER MANAGEMENT PROGRAM - 2025

ILLICIT DISCHARGE DETECTION AND ELIMINATION INSPECTION FORM

ZONE 1

STREET	START	END	DESIGNATION	POTENTIAL ILLICIT DISCHARGE OBSERVED? (IF "YES," FILL OUT DISCHARGE TRACKING SHEET)	COMMENTS
SEGUIN RD. (FM 78)	WEST CITY LIMIT	MACRAE LN.	FM78-I-1	YES / <input checked="" type="radio"/> NO	
			FM78-I-2	YES / <input checked="" type="radio"/> NO	
			FM78-I-3	YES / <input checked="" type="radio"/> NO	
	MACRAE LN.	OTTO		YES / <input checked="" type="radio"/> NO	
	OTTO	JAENKE ST.	FM78-I-4	YES / <input checked="" type="radio"/> NO	
			FM78-I-5		
			FM78-I-6		
	JAENKE ST.	GIBBS SPRAWL RD.	FM78-I-7	YES / <input checked="" type="radio"/> NO	
	GIBBS SPRAWL RD.	HALL AVE.		YES / <input checked="" type="radio"/> NO	
HALL AVE.	EAST CITY LIMIT		YES / <input checked="" type="radio"/> NO		
OLD SEGUIN RD.	SEGUIN RD. (FM 78)	MACRAE LN.		YES / <input checked="" type="radio"/> NO	
	MACRAE LN.	DIADEM LN.		YES / <input checked="" type="radio"/> NO	
	DIADEM LN.	EDALYN ST.	OSEG-I-1	YES / <input checked="" type="radio"/> NO	
			OSEG-I-3	YES / <input checked="" type="radio"/> NO	
			OSEG-I-2	YES / <input checked="" type="radio"/> NO	
			OSEG-I-4	YES / <input checked="" type="radio"/> NO	
	EDALYN ST.	VINECREST DRN		YES / <input checked="" type="radio"/> NO	
	VINECREST DRN	KIRBY DR.		YES / <input checked="" type="radio"/> NO	
	KIRBY DR.	JAENKE ST.		YES / <input checked="" type="radio"/> NO	
	JAENKE ST.	BAUMAN ST.		YES / <input checked="" type="radio"/> NO	
	BAUMAN ST.	ACKERMAN LN.		YES / <input checked="" type="radio"/> NO	
	ACKERMAN LN.	GIBBS SPRAWL RD.		YES / <input checked="" type="radio"/> NO	
	GIBBS SPRAWL RD.	HOENEKE DR.		YES / <input checked="" type="radio"/> NO	
HOENEKE DR.	EAST CITY LIMIT		YES / <input checked="" type="radio"/> NO		
MACRAE LN.	SEGUIN RD. (FM 78)	OLD SEGUIN RD.		YES / <input checked="" type="radio"/> NO	
OTTO	SEGUIN RD. (FM 78)	EDALYN ST.		YES / <input checked="" type="radio"/> NO	

EDALYN ST.	OLD SEGUIN RD.	OTTO		YES / <input checked="" type="radio"/> NO
	OTTO	STREET END (100 BLK)		YES / <input checked="" type="radio"/> NO
	STREET END (400 BLK)	JAENKE ST.		YES / <input checked="" type="radio"/> NO
	JAENKE ST.	BAUMAN ST.		YES / <input checked="" type="radio"/> NO
	BAUMAN ST.	STREET END (600 BLK)		YES / <input checked="" type="radio"/> NO
JAENKE ST.	SEGUIN RD. (FM 78)	EDALYN ST.		YES / <input checked="" type="radio"/> NO
	EDALYN ST.	HEDWIG ST		YES / <input checked="" type="radio"/> NO
	HEDWIG ST	OLD SEGUIN RD.		YES / <input checked="" type="radio"/> NO
BAUMAN ST	EDALYN ST.	HEDWIG ST		YES / <input checked="" type="radio"/> NO
	HEDWIG ST	OLD SEGUIN RD.		YES / <input checked="" type="radio"/> NO
HEDWIG ST.	JAENKE ST.	BAUMAN ST.		YES / <input checked="" type="radio"/> NO
	BAUMAN ST.	GIBBS SPRAWL RD.		YES / <input checked="" type="radio"/> NO
GIBBS SPRAWL RD.	EAST CITY LIMIT	SEGUIN RD. (FM 78)		YES / <input checked="" type="radio"/> NO
	SEGUIN RD. (FM 78)	KIRBY HEIGHTS ST.	GIB-I-05	YES / <input checked="" type="radio"/> NO
	KIRBY HEIGHTS ST.	OLD SEGUIN RD.	GIB-I-04	YES / <input checked="" type="radio"/> NO
			GIB-I-03	YES / <input checked="" type="radio"/> NO
			GIB-I-02	YES / <input checked="" type="radio"/> NO
			GIB-I-01	YES / <input checked="" type="radio"/> NO
KIRBY HEIGHTS ST.	GIBBS SPRAWL RD.	STREET END	GIB-I-06	YES / <input checked="" type="radio"/> NO
HALL AVE.	STREET END	SEGUIN RD. (FM 78)		YES / <input checked="" type="radio"/> NO
FM 78	SEGUIN RD. (FM 78)	OLD SEGUIN RD.	FM78-O-01	YES / <input checked="" type="radio"/> NO

Kyle Stengl
INSPECTOR (SIGNATURE)

11/20/25
DATE INSPECTED

Kyle Stengl
INSPECTOR (PRINTED)

KIRBY STORM WATER MANAGEMENT PROGRAM - 2025

ILLICIT DISCHARGE DETECTION AND ELIMINATION INSPECTION FORM

ZONE 3

STREET	START	END	DESIGNATION	POTENTIAL ILLICIT DISCHARGE OBSERVED? (IF "YES," FILL OUT DISCHARGE TRACKING SHEET)	COMMENTS
CHARLES CONRAD DR.	OLD SEGUIN RD	GENE CERNAN DR.		YES / <input checked="" type="radio"/> NO	
	GENE CERNAN DR.	DAVID SCOTT DR.		YES / <input checked="" type="radio"/> NO	
	DAVID SCOTT DR.	CINDERELLA ST.		YES / <input checked="" type="radio"/> NO	
GENE CERNAN DR.	CHARLES CONRAD DR.	CUL DE SAC		YES / <input checked="" type="radio"/> NO	
DAVID SCOTT DR.	CHARLES CONRAD DR.	CUL DE SAC		YES / <input checked="" type="radio"/> NO	
CINDERELLA ST.	WEST ZONE BOUNDARY	CHARLES CONRAD DR.		YES / <input checked="" type="radio"/> NO	
	CHARLES CONRAD DR.	DIADEM LN.		YES / <input checked="" type="radio"/> NO	
DIADEM LN.	OLD SEGUIN RD.	STARFIRE LN.		YES / <input checked="" type="radio"/> NO	
	STARFIRE LN.	KAZEN DR.		YES / <input checked="" type="radio"/> NO	
	KAZEN DR.	REDDING DR.		YES / <input checked="" type="radio"/> NO	
	REDDING DR.	CINDERELLA ST.		YES / <input checked="" type="radio"/> NO	
STARFIRE LN	DIADEM LN.	HAUCK DR.		YES / <input checked="" type="radio"/> NO	
	HAUCK DR.	AUTUMN LN.		YES / <input checked="" type="radio"/> NO	
	AUTUMN LN.	EAST ZONE BOUNDARY	STR-I-01	YES / <input checked="" type="radio"/> NO	
HAUCK DR.	STARFIRE LN.	KAZEN DR.		YES / <input checked="" type="radio"/> NO	
KAZEN DR.	DIADEM LN.	HAUCK DR.		YES / <input checked="" type="radio"/> NO	
	HAUCK DR.	PETRY DR.		YES / <input checked="" type="radio"/> NO	
	PETRY DR.	KAZEN CIRCLE		YES / <input checked="" type="radio"/> NO	
	KAZEN CIRCLE	AUTUMN LN.		YES / <input checked="" type="radio"/> NO	
REDDING DR.	DIADEM LN.	AUTUMN LN.		YES / <input checked="" type="radio"/> NO	
	AUTUMN LN.	EAST ZONE BOUNDARY	REDD-I-01	YES / <input checked="" type="radio"/> NO	
			REDD-I-02	YES / <input checked="" type="radio"/> NO	
PETRY DR.	AUTUMN LN.	CUL DE SAC		YES / <input checked="" type="radio"/> NO	
	CUL DE SAC	KAZEN DR.		YES / <input checked="" type="radio"/> NO	
AUTUMN LN.	STARFIRE LN.	PETRY DR.		YES / <input checked="" type="radio"/> NO	
	PETRY DR.	KAZEN DR.		YES / <input checked="" type="radio"/> NO	
	KAZEN DR.	REDDING DR.		YES / <input checked="" type="radio"/> NO	

Kyle Strong
INSPECTOR (SIGNATURE)

11/20/25
DATE INSPECTED

Kyle Strong
INSPECTOR (PRINTED)

KIRBY STORM WATER MANAGEMENT PROGRAM - 2025

ILLICIT DISCHARGE DETECTION AND ELIMINATION INSPECTION FORM

ZONE 4

STREET	START	END	DESIGNATION	POTENTIAL ILLICIT DISCHARGE OBSERVED? (IF "YES," FILL OUT DISCHARGE TRACKING SHEET)	COMMENTS
VINECREST DR.	OLD SEGUIN RD.	PEPPERMINT LN.		YES / <input checked="" type="radio"/> NO	
	PEPPERMINT LN.	STARFIRE LN.		YES / <input checked="" type="radio"/> NO	
	STARFIRE LN.	VELVET LN.		YES / <input checked="" type="radio"/> NO	
	VELVET LN.	ECLIPSE LN.		YES / <input checked="" type="radio"/> NO	
	ECLIPSE LN.	REDDING DR.		YES / <input checked="" type="radio"/> NO	
	REDDING DR.	CINDERELLA ST.		YES / <input checked="" type="radio"/> NO	
	CINDERELLA ST.	KIRBY DR.		YES / <input checked="" type="radio"/> NO	
VINECREST CIRCLE	VINECREST DR.	CUL DE SAC		YES / <input checked="" type="radio"/> NO	
PEPPERMINT LN.	VINECREST DR.	KIRBY DR.		YES / <input checked="" type="radio"/> NO	
	KIRBY DR.	GAIETY LN.		YES / <input checked="" type="radio"/> NO	
	GAIETY LN.	ACKERMAN RD.		YES / <input checked="" type="radio"/> NO	
STARFIRE LN.	WEST ZONE BOUNDARY	VINECREST DR.		YES / <input checked="" type="radio"/> NO	
	VINECREST DR.	DAFFODIL LN.		YES / <input checked="" type="radio"/> NO	
	DAFFODIL LN.	KIRBY DR.		YES / <input checked="" type="radio"/> NO	
DAFFODIL LN.	STARFIRE LN.	STARBURST CIR.		YES / <input checked="" type="radio"/> NO	
	STARBURST CIR.	KIRBY DR.		YES / <input checked="" type="radio"/> NO	
STARBURST CIRCLE	DAFFODIL LN.	CUL DE SAC		YES / <input checked="" type="radio"/> NO	
VELVET LN.	VINECREST DR.	KIRBY DR.		YES / <input checked="" type="radio"/> NO	
ECLIPSE LN.	VINECREST DR.	KIRBY DR.		YES / <input checked="" type="radio"/> NO	
REDDING DR.	WEST ZONE BOUNDARY	CUL DE SAC	REDD-I-03	YES / <input checked="" type="radio"/> NO	
			REDD-I-04	YES / <input checked="" type="radio"/> NO	
CINDERELLA ST.	VINECREST DR.	KIRBY DR.		YES / <input checked="" type="radio"/> NO	
	KIRBY DR.	GAIETY LN.		YES / <input checked="" type="radio"/> NO	
	GAIETY LN.	ACKERMAN LN.		YES / <input checked="" type="radio"/> NO	

KIRBY DR.	OLD SEGUIN RD.	PEPPERMINT LN. (WEST)		YES / <input checked="" type="radio"/> NO
	PEPPERMINT LN. (WEST)	PEPPERMINT LN. (EAST)		YES / <input checked="" type="radio"/> NO
	PEPPERMINT LN. (EAST)	STARFIRE LN.		YES / <input checked="" type="radio"/> NO
	STARFIRE LN.	DAFFODIL LN.		YES / <input checked="" type="radio"/> NO
	DAFFODIL LN.	VELVET LN.		YES / <input checked="" type="radio"/> NO
	VELVET LN.	ECLIPSE LN.		YES / <input checked="" type="radio"/> NO
	ECLIPSE LN.	CINDERELLA ST.		YES / <input checked="" type="radio"/> NO
	CINDERELLA ST.	VINECREST DR.		YES / <input checked="" type="radio"/> NO
	VINECREST DR.	SOUTH ZONE BOUNDARY		YES / <input checked="" type="radio"/> NO
GAIETY LN.	PEPPERMINT LN.	SPARKLING LN.		YES / <input checked="" type="radio"/> NO
	SPARKLING LN.	CINDERELLA ST.		YES / <input checked="" type="radio"/> NO
	CINDERELLA ST.	STREET END		YES / <input checked="" type="radio"/> NO
SPARKLING LN.	STREET END	GAIETY LN.		YES / <input checked="" type="radio"/> NO
	GAIETY LN.	ACKERMAN RD.		YES / <input checked="" type="radio"/> NO
ACKERMAN RD.	OLD SEGUIN RD.	PFEIL ST.		YES / <input checked="" type="radio"/> NO
	PFEIL ST.	PEPPERMINT LN.		YES / <input checked="" type="radio"/> NO
	PEPPERMINT LN.	HARRIS RD.		YES / <input checked="" type="radio"/> NO
	HARRIS RD.	SPARKLING LN.		YES / <input checked="" type="radio"/> NO
	SPARKLING LN.	TAUBE RD.		YES / <input checked="" type="radio"/> NO
	TAUBE RD.	CINDERELLA ST.		YES / <input checked="" type="radio"/> NO
	CINDERELLA ST.	WEST ZONE BOUNDARY		YES / <input checked="" type="radio"/> NO



 INSPECTOR (SIGNATURE)

11/20/25

 DATE INSPECTED

Kyle Stengel

 INSPECTOR (PRINTED)

KIRBY STORM WATER MANAGEMENT PROGRAM - 2025

ILLICIT DISCHARGE DETECTION AND ELIMINATION INSPECTION FORM

ZONE 5

STREET	START	END	DESIGNATION	POTENTIAL ILLICIT DISCHARGE OBSERVED? (IF "YES," FILL OUT DISCHARGE TRACKING SHEET)	COMMENTS
HOENEKE DR.	OLD SEGUIN RD.	LEHMAN DR.		YES / <input checked="" type="radio"/> NO	
	LEHMAN DR.	HICKORY HILL DR.		YES / <input checked="" type="radio"/> NO	
	HICKORY HILL DR.	PFEIL ST.		YES / <input checked="" type="radio"/> NO	
	PFEIL ST.	HARRIS RD.		YES / <input checked="" type="radio"/> NO	
PFEIL ST.	ACKERMAN RD.	HOENEKE DR.		YES / <input checked="" type="radio"/> NO	
HICKORY HILL DR.	HOENEKE DR.	HARRIS RD.		YES / <input checked="" type="radio"/> NO	
	HARRIS RD.	TAUBE RD.		YES / <input checked="" type="radio"/> NO	
	TAUBE RD.	CUL DE SAC		YES / <input checked="" type="radio"/> NO	
LEHMAN DR.	HOENEKE DR.	HARRIS RD.		YES / <input checked="" type="radio"/> NO	
HARRIS RD.	ACKERMAN RD.	HOENEKE DR.		YES / <input checked="" type="radio"/> NO	
	HOENEKE DR.	HICKORY HILL DR.		YES / <input checked="" type="radio"/> NO	
	HICKORY HILL DR.	LEHMAN DR.		YES / <input checked="" type="radio"/> NO	
BINZ ENGLEMAN RD.	ACKERMAN RD.	EAST CITY LIMIT		YES / <input checked="" type="radio"/> NO	
LANDIS DR.	ACKERMAN RD.	STREET END		YES / <input checked="" type="radio"/> NO	
IDA BELL DR.	ACKERMAN RD.	STREET END		YES / <input checked="" type="radio"/> NO	
WEXFORD DR.	ACKERMAN RD.	STREET END		YES / <input checked="" type="radio"/> NO	
ACKERMAN RD.	3223 ACKERMAN	BINZ ENGLEMAN RD.		YES / <input checked="" type="radio"/> NO	
	BINZ ENGLEMAN RD.	DUFFEK	AKMN-I-01	YES / <input checked="" type="radio"/> NO	
			AKMN-I-07		
			AKMN-I-02		
			AKMN-I-06		
		AKMN-I-03			

			AKMN-I-05	
	DUFFEK	IDA BELL DR.	AKMN-I-04	YES / <input checked="" type="radio"/> NO
	IDA BELL DR.	BORCHERS DR.		YES / <input checked="" type="radio"/> NO
	BORCHERS DR.	WEXFORD DR.		YES / <input checked="" type="radio"/> NO
	WEXFORD DR.	BOATMAN RD.		YES / <input checked="" type="radio"/> NO
	BOATMAN RD.	PAGELAND DR.		YES / <input checked="" type="radio"/> NO
	PAGELAND DR.	SOUTH CITY LIMIT		YES / <input checked="" type="radio"/> NO
TAUBE	ACKERMAN RD.	HICKORY HILL DR.		YES / <input checked="" type="radio"/> NO

[Signature]
INSPECTOR (SIGNATURE)

11/20/25
DATE INSPECTED

Kyle Stenzel
INSPECTOR (PRINTED)

KIRBY STORM WATER MANAGEMENT PROGRAM - 2025

ILLICIT DISCHARGE DETECTION AND ELIMINATION INSPECTION FORM

ZONE 6

STREET	START	END	DESIGNATION	POTENTIAL ILLICIT DISCHARGE OBSERVED? (IF "YES," FILL OUT DISCHARGE TRACKING SHEET)	COMMENTS
CHARLES CONRAD DR.	CINDERELLA ST.	ED WHITE DR.		YES / <input checked="" type="radio"/> NO	
	ED WHITE DR.	FRANK BORMAN DR.		YES / <input checked="" type="radio"/> NO	
	FRANK BORMAN DR.	JOHN YOUNG DR.		YES / <input checked="" type="radio"/> NO	
	JOHN YOUNG DR.	BINZ ENGLEMAN RD.		YES / <input checked="" type="radio"/> NO	
ED WHITE DR.	CHARLES CONRAD DR.	CUL DE SAC		YES / <input checked="" type="radio"/> NO	
FRANK BORMAN DR.	CHARLES CONRAD DR.	CUL DE SAC		YES / <input checked="" type="radio"/> NO	
JOHN YOUNG DR.	CHARLES CONRAD DR.	CUL DE SAC		YES / <input checked="" type="radio"/> NO	
BINZ ENGLEMAN RD.	WEST ZONE BOUNDARY	CHARLES CONRAD DR.	BNZ-I-01	YES / <input checked="" type="radio"/> NO	
	CHARLES CONRAD DR.	FRED HAISE DR.		YES / <input checked="" type="radio"/> NO	
	FRED HAISE DR.	CREST LN.		YES / <input checked="" type="radio"/> NO	
	CREST LN.	JAMES LOVELL DR.		YES / <input checked="" type="radio"/> NO	
	JAMES LOVELL DR.	ACKERMAN RD.		YES / <input checked="" type="radio"/> NO	
DIADEM LN.	CINDERELLA ST.	CORAL MIST DR.		YES / <input checked="" type="radio"/> NO	
	CORAL MIST DR.	CROWN LN.		YES / <input checked="" type="radio"/> NO	
	CROWN LN.	HAPPINESS LN.		YES / <input checked="" type="radio"/> NO	
CINDERELLA ST.	DIADEM LN.	AUTUMN LN.		YES / <input checked="" type="radio"/> NO	
CORAL MIST DR.	DIADEM LN.	AUTUMN LN.		YES / <input checked="" type="radio"/> NO	
CROWN LN.	DIADEM LN.	CREST LN.		YES / <input checked="" type="radio"/> NO	
	CREST LN.	AUTUMN LN.		YES / <input checked="" type="radio"/> NO	
HAPPINESS LN.	DIADEM LN.	CREST LN.		YES / <input checked="" type="radio"/> NO	
	CREST LN.	KIRBY DR.		YES / <input checked="" type="radio"/> NO	
KIRBY DR.	OLD SEGUINE	HAPPINESS LN.	KIRDR-I-01	YES / <input checked="" type="radio"/> NO	
			KIRDR-I-02	YES / <input checked="" type="radio"/> NO	
			KIRDR-I-03	YES / <input checked="" type="radio"/> NO	

CREST LN.	CROWN LN.	HAPPINESS LN.		YES / <input checked="" type="radio"/> NO	
	HAPPINESS LN.	BINZ ENGLEMAN RD.		YES / <input checked="" type="radio"/> NO	
AUTUMN LN.	REDDING DR.	CINDERELLA ST.		YES / <input checked="" type="radio"/> NO	
	CINDERELLA ST.	CORAL MIST DR.		YES / <input checked="" type="radio"/> NO	
	CORAL MIST DR.	CROWN LN.		YES / <input checked="" type="radio"/> NO	
	CROWN LN.	KIRBY DR.	AUTLN-I-01	YES / <input checked="" type="radio"/> NO	
			AUTLN-I-02	YES / <input checked="" type="radio"/> NO	


INSPECTOR (SIGNATURE)

11/20/25
DATE INSPECTED

Kyle Stengel
INSPECTOR (PRINTED)

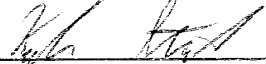
KIRBY STORM WATER MANAGEMENT PROGRAM - 2025

ILLICIT DISCHARGE DETECTION AND ELIMINATION INSPECTION FORM

ZONE 7

STREET	START	END	DESIGNATION	POTENTIAL ILLICIT DISCHARGE OBSERVED (IF "YES," FILL OUT DISCHARGE TRACKING SHEET)	COMMENTS
CHARLES CONRAD DR.	BINZ ENGLEMAN RD.	TOM STAFFORD DR.		YES / <u>NO</u>	
	TOM STAFFORD DR.	WALT SCHIRRA DR.		YES / <u>NO</u>	
	WALT SCHIRRA DR.	THOMAS PAINE DR.		YES / <u>NO</u>	
	THOMAS PAINE DR.	GORDON COOPER DR.		YES / <u>NO</u>	
TOM STAFFORD DR.	CHARLES CONRAD DR.	FRED HAISE DR.		YES / <u>NO</u>	
	FRED HAISE DR.	CREST LN.		YES / <u>NO</u>	
	CREST LN.	JAMES LOVELL DR.		YES / <u>NO</u>	
WALT SCHIRRA DR.	CHARLES CONRAD DR.	CUL DE SAC		YES / <u>NO</u>	
THOMAS PAINE DR.	CHARLES CONRAD DR.	CUL DE SAC		YES / <u>NO</u>	
GORDON COOPER DR.	CHARLES CONRAD DR.	ROD SCHAFFE DR.		YES / <u>NO</u>	
	ROD SCHAFFE DR.	FRED HAISE DR.		YES / <u>NO</u>	
	FRED HAISE DR.	VON BRAUN DR.		YES / <u>NO</u>	
	VON BRAUN DR.	JAMES WEBB DR.		YES / <u>NO</u>	
	JAMES WEBB DR.	CREST LN.		YES / <u>NO</u>	
	CREST LN.	JAMES LOVELL DR.		YES / <u>NO</u>	
ROD SCHAFFE DR.	GORDON COOPER DR.	CUL DE SAC		YES / <u>NO</u>	
FRED HAISE DR.	BINZ ENGLEMAN RD.	TOM STAFFORD DR.		YES / <u>NO</u>	
	TOM STAFFORD DR.	GORDON COOPER DR.		YES / <u>NO</u>	
VON BRAUN DR.	GORDON COOPER DR.	CUL DE SAC		YES / <u>NO</u>	
JAMES WEBB DR.	GORDON COOPER DR.	CUL DE SAC		YES / <u>NO</u>	
ALAN BEAN DR.	JAMES LOVELL DR.	CREST LN.		YES / <u>NO</u>	

	CREST LN.	CUL DE SAC		YES / NO
CREST LN.	BINZ ENGLEMAN RD.	TOM STAFFORD DR.		YES / NO
	TOM STAFFORD DR.	ALAN BEAN DR.		YES / NO
	ALAN BEAN DR.	GORDON COOPER DR.		YES / NO
	GORDON COOPER DR.	SOUTH ZONE BOUNDARY	CLN-I-01	YES / NO
			CLN-I-02	YES / NO
JAMES LOVELL DR.	BINZ ENGLEMAN RD.	TOM STAFFORD DR.		YES / NO
	TOM STAFFORD DR.	ALAN BEAN DR.		YES / NO
	ALAN BEAN DR.	GORDON COOPER DR.		YES / NO
DUFFEK DR.	ACKERMAN RD.	CUL DE SAC		YES / NO



 INSPECTOR (SIGNATURE)

11/20/25

 DATE INSPECTED

Kyle Stempel

 INSPECTOR (PRINTED)

Exhibit C

Supporting Documents for MCM 3

- 3.2 Site Review Program
- 3.6 City Staff Training and Development



515 Busby Drive, San Antonio, Texas 78209
TBPE No. F-2573

November 13, 2025

Chief Roxanne Cardona, Chief of Police

City of Kirby

112 Bauman

Kirby, Texas 78219

Re: Retana Auto Sales – 435 Edalyn St. Kirby, Texas 78219
Storm Water Pollution Prevention Plan (SWPPP) – Final Review
Project No. KIRBY-001X

Dear Chief Cardona:

GEI has reviewed the storm water pollution prevention plan (SWPPP) and application submitted by Mario Morales on November 13, 2025. After reviewing the information provided, we have determined that the submitted application and plan set is sufficient for the work being conducted. We have no comments, and recommend the city proceed with the issuing of a permit for this project.

Thank you for the opportunity to review and comment on the SWPPP for this project. Please do not hesitate to call me if you have any questions.

Sincerely,

Kyle Stengl - CISEC #3269

Kyle Stengl, CISEC #3269

Givler Engineering, Inc.

Cc: Christine Wilson, City Secretary

citysecretary@cityofkirby.org



Ecopliant Environmental, Inc.

P.O. Box 188
Parker, CO 80134
Ph: (720) 235-2783
Fax: 720-600-2658
E-mail: contactus@ecopliant.org




Ecopliant Environmental, Inc. Ecopliant CISEC Wallet

Name: Kyle Stengl

Order Date: December 2024

Below is your wallet card.

Please print this card and keep it in your wallet or your files.

 <p>Ecopliant Environmental, Inc. Board of Directors certifies that Kyle Stengl</p> <p><i>has demonstrated satisfactory evidence of sediment and erosion control inspection skills and successfully passed the certification examination and therefore, as required by Ecopliant Environmental, Inc. is authorized to use the title of</i></p> <p>Certified Inspector of Sediment and Erosion Control</p> <p>3269  November 30, 2025</p>	<p>As a CISEC Registrant, I agree to the following:</p> <ul style="list-style-type: none"> At all times, strictly abide by the Ecopliant CISEC Code of Ethics, Perform all services in a professional manner and uphold professional standards in relating to the public, to other Ecopliant CISEC registrants and to other professionals within the industry, Earn at least 12 PDHs each year after becoming a CISEC registrant, and Pay the annual renewal fees.  <p>Ecopliant ENVIRONMENTAL P.O. Box 188 Parker, CO 80134 720-235-2783 www.ecopliant.org</p>						
<table border="1"> <tr> <td>CISEC #</td> <td>Ecopliant Environmental</td> <td>Expire Date</td> </tr> <tr> <td></td> <td>President</td> <td></td> </tr> </table>	CISEC #	Ecopliant Environmental	Expire Date		President		<p>Signature (required)</p>
CISEC #	Ecopliant Environmental	Expire Date					
	President						

ECOPLIANT ENVIRONMENTAL, INC.

CERTIFICATE OF COURSE COMPLETION

Kyle Stengl

has attended the

What's Wrong With This Picture?

Common BMP's, Part 2

for one (1.0) Professional Development Hour (PDH) or 0.1 Continuing Education Unit

(CEU) as presented on

June 26, 2025 via a Live Virtual Webinar

as presented by CAL-Storm Compliance, Inc.



Jeanne Duarte

Ecopliant Environmental, Inc.

President





Tracy Sims

Ecopliant Environmental, Inc.

Vice President

Certificate of Course Completion

Grundfos Wastewater Solutions

Issued to the following Participant:

Kyle Stengl

Having completed the required studies prescribed in the above-mentioned course by the Subject Matter Expert, the participant is hereby granted this Certificate of Proficiency and Merit from Grundfos.

Educational Units Issued: 1 Professional Developmental Hours

Date: 3/12/2025

Instructor: *Megan Roensch*
District Sales Manager

GRUNDFOS 

Industrial Fabrics - PDH Certificate - Kyle Stengl

From Engineering <engineering@ind-fab.com>

Date Thu 5/15/2025 1:40 PM

To Kyle Stengl <stengl@givlerengineering.com>



INDUSTRIAL FABRICS, INC.
CONSTRUCTION PRODUCTS & ENGINEERING SOLUTIONS

Certificate of Completion

This certifies that

Kyle Stengl

has successfully completed 1.5 hours of Professional Development Credit* in:

Introduction to BaseLok GeoCell

Presenter: Keith Brooks, P.E.

Date: 05/15/2025

*The State Board has the right to accept/reject all programs. Nothing is pre-approved.

ECOPLIANT ENVIRONMENTAL, INC.

CERTIFICATE OF COURSE COMPLETION

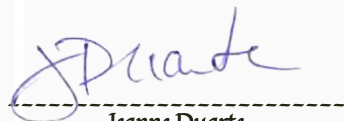
Kyle Stengl

has attended the

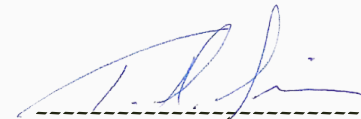
What's Wrong With This Picture?

Common BMP's Part 1

for one (1.0) Professional Development Hour (PDH) or 0.1 Continuing Education Unit
(CEU) as presented on May 6, 2025 via a Live Virtual Webinar
as presented by CAL-Storm Compliance, Inc.



Jeanne Duarte
Ecopliant Environmental, Inc.
President



Tracy Sims
Ecopliant Environmental, Inc.
Vice President

CERTIFICATE

OF ACHIEVEMENT
THIS CERTIFICATE IS PROUDLY PRESENTED TO

Kyle Stengl

One (1) PDH (Professional Development Hours) is proudly awarded to the above attendee for the completion of GeoSTORM training seminar presented on the below date by CivilGEO Engineering.

March 14, 2025

DATE



CHRIS MAEDER, M.S., P.E., CFM, INSTRUCTOR

The engineering training services provided by CivilGEO follow the ACCET and IACET organizations continuing education training standards, policies, and procedures to provide quality educational training.

Exhibit D

Supporting Documents for MCM 5

- 5.2 Municipal Employee Training
- 5.3 Street Sweeping
- 5.4 Pest Management Program
- 5.7 Inventory of Facilities and Stormwater Controls

ATTENDANCE SHEET
Municipal Employee Stormwater Training



PROJECT: Phase II Stormwater
 PROJECT NO: KIRBY-001

INSTRUCTOR: Givler Engineering, Inc.
 LOCATION: Kirby Public Works

515 Busby Drive,
 San Antonio, Texas 78209

NAME	DATE	DEPARTMENT
1. Erasmo Hernandez	12/18/25	P.W. STREETS
2. Samantha Sanchez	12/18/25	P.W. Streets
3. David Hunt	12/18/25	P.W. Parks
4. Armando Marquez	12/18/25	P.W. Water
5. Ashiteru Lauterbach	12/18/25	P.W. Water
6. David Hernandez JR	12/18/25	p.w. water
7. Marcos Peña	12/18/25	P.W. / Water
8.		
9.		
10.		
11.		
12.		
13.		
14.		



CITY OF KIRBY STREET SWEEP LOG

VEHICLE:

TYMCO S0016

NAME	DATE	LOCATION/ZONE SWEPT	DEPTH OF TRASH COLLECTED
Moe	01/06/25	3	6 Loads
Moe	04/07/25	2	4 Loads
Moe	04/14/25	1	6 Loads
Moe	04/15/25	4	6 Loads
Moe	04/16/25	2	5 Loads
Moe	06/02/25	1	3 Loads
Moe	06/09/25	3	2 Loads
Moe	06/16/25	4	4 Loads
Moe	06/23/25	2	3 Loads
Moe	07/07/25	3	4 Loads
Moe	07/21/25	1	3 Loads
Moe	07/28/25	4	4 Loads
Moe	08/04/25	2	3 Loads
Moe	08/18/25	3	3 Loads
Moe	08/25/25	4	4 Loads
Moe	09/08/25	1	5 Loads
Moe	09/15/25	2	4 Loads
Moe	09/22/25	3	4 Loads
Moe	09/29/25	4	4 Loads
Moe			
Moe			



Public Works Department
will be out spraying for mosquitoes
Friday evening and continuing
overnight.



Please keep all pets inside by
800pm.



June 27th, 2025



For questions or more information, please contact
210-237-6322.

Let's work together to keep mosquitoes away
- here are some simple steps we can all take!



Cover all water containers



Empty unused buckets, tires, and plant pots



Use mosquito nets and repellents



Clean your surroundings weekly





Inventory of Facilities & Stormwater Controls

I. CITY INFORMATION			
City Name:	The City of Kirby	Reporting Period Year:	2025
Main Address:	112 Bauman, Kirby, TX 78219		
II. FACILITIES AND CONTROLS			
a. Composting Facility			
<ul style="list-style-type: none"> None 			
b. Equipment Storage and Maintenance Facilities			
<ul style="list-style-type: none"> None 			
c. Fuel Storage Facilities			
<ul style="list-style-type: none"> None 			
d. Hazardous Waste Disposal Facilities			
<ul style="list-style-type: none"> None 			
e. Hazardous Waste Handling and Transfer Facilities			
<ul style="list-style-type: none"> None 			
f. Incinerators			
<ul style="list-style-type: none"> None 			
g. Landfills			
<ul style="list-style-type: none"> None 			
h. Material Storage Yards			
<ul style="list-style-type: none"> None 			
i. Pesticides Storage Facilities			
<ul style="list-style-type: none"> None 			
j. Buildings, Including Schools, Libraries, Police Stations, Fire Stations, and Office Buildings			
<ol style="list-style-type: none"> Kirby Municipal Building, 112 Bauman, Kirby TX 78219 Kirby Senior Center, 3211 Alan Shepard D., Kirby, TX 78219 Kirby Police Department, 4130 Ackerman Rd., Kirby, TX 78219 Kirby Animal Shelter, 5503 Duffek Dr., Kirby, TX 78219 Kirby Fire Department, 5560 Duffek Dr., Kirby, TX 78219 			
k. Parking Lots			
<ol style="list-style-type: none"> Hugo Lentz Park, 5750 Old Seguin Rd, Kirby TX 78219 Friendship Park, 5745 Binz-Engleman Rd, Kirby TX 78219 			
l. Golf Courses			
<ul style="list-style-type: none"> None 			
m. Swimming Pools			
<ol style="list-style-type: none"> Kirby City Pool, 3211 Charles Conrad Dr, Kirby, TX 78219 			
n. Public Works Yards			
<ol style="list-style-type: none"> Public Works Office & Yard, 5503 Duffek Dr., Kirby, TX 78219 Water Tower, Peppermint Ln, Kirby TX 78219 Water Tower, Featherrock, Kirby TX 78219 			
o. Recycling Facilities			
<ul style="list-style-type: none"> None 			

p. Salt Storage Facilities

- *None*

q. Solid Waste Handling and Transfer Facilities

- *None*

r. Street Repair and Maintenance Yards

- 1) *Maintenance Yard, 399 Gaiety Ln., Kirby, TX 78219*

s. Vehicle Storage and Maintenance Yards

- 1) *Police Impound Yard, 5637 Seguin Rd., Kirby, TX 78212*

t. Structural Stormwater Controls

- Refer to BMP 1.2